

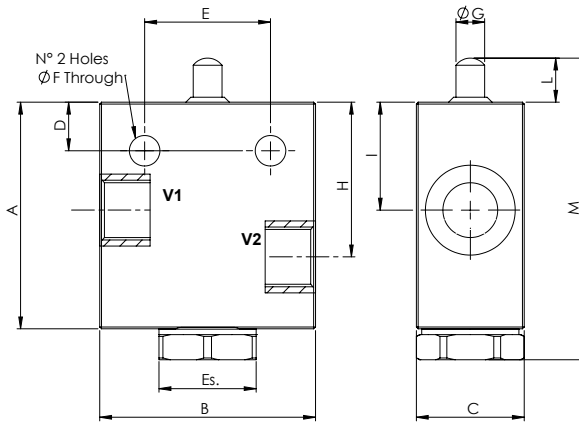
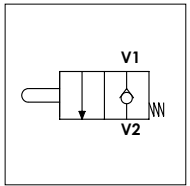
**END STROKE VALVES**  
*VALVOLE DI FINE CORSA*

---

## WFC NC

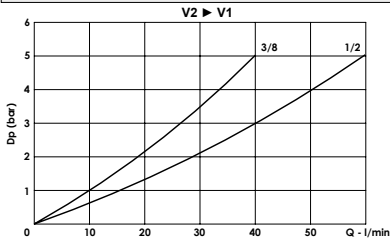
### TECHNICAL DATA

- **Flow:** (See Table)
- **Max working pressure:** (See Table)
- **Materials:** Steel Body
- **Weight:** (See Table)



| PORTS              |       |       |
|--------------------|-------|-------|
| V1 - V2            | 3/8   | 1/2   |
| DIMENSIONS         |       |       |
| A                  | 65    | 77    |
| B                  | 60    | 70    |
| C                  | 30    | 35    |
| D                  | 13,5  | 13,5  |
| E                  | 35    | 40    |
| F                  | 8,5   | 8,5   |
| G                  | 8     | 12    |
| H                  | 43    | 51    |
| I                  | 30    | 37    |
| L                  | 12,3  | 11,8  |
| M                  | 83,9  | 95,5  |
| Es.                | 27    | 32    |
| Max Pressure (bar) | 350   | 350   |
| Max Flow (l/min)   | 30    | 60    |
| Weight (kg)        | 0,800 | 1,280 |

### PRESSURE DROP CURVES



## ORDERING CODE:

WFC

NC

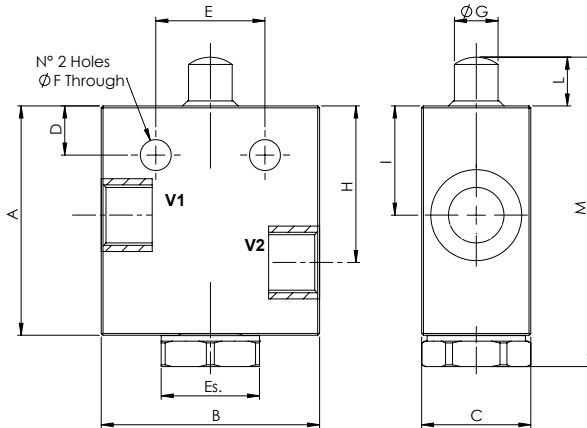
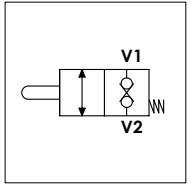
Ports Size:

- 3/8
- 1/2

## WFC DT

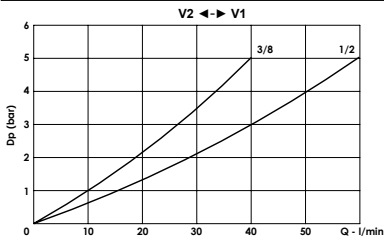
### TECHNICAL DATA

- **Flow:** (See Table)
- **Max working pressure:** (See Table)
- **Materials:** Steel Body
- **Weight:** (See Table)



| PORTS              |       |       |
|--------------------|-------|-------|
| V1 - V2            | 3/8   | 1/2   |
| DIMENSIONS         |       |       |
| A                  | 65    | 77    |
| B                  | 60    | 70    |
| C                  | 30    | 35    |
| D                  | 13,5  | 13,5  |
| E                  | 30    | 40    |
| F                  | 8,5   | 8,5   |
| G                  | 12    | 16    |
| H                  | 43    | 51    |
| I                  | 30    | 37    |
| L                  | 13,4  | 13,3  |
| M                  | 85    | 97    |
| Es.                | 27    | 32    |
| Max Pressure (bar) | 350   | 350   |
| Max Flow (l/min)   | 30    | 60    |
| Weight (kg)        | 0,800 | 1,280 |

### PRESSURE DROP CURVES



## ORDERING CODE:

WFC

DT

**Port Size:**

- 3/8
- 1/2