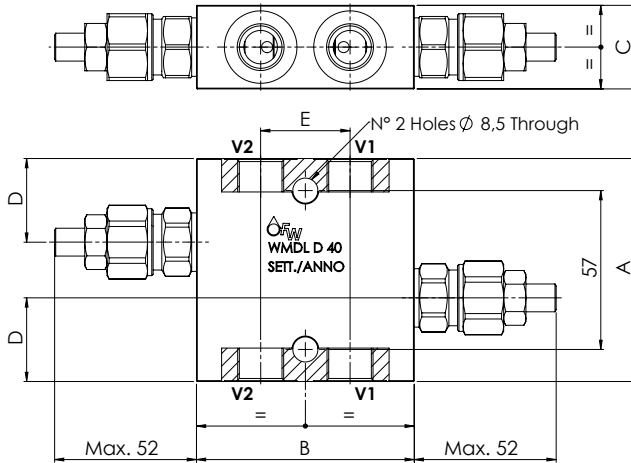
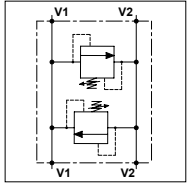

DUAL CROSS RELIEF VALVES
VALVOLE REGOLATRICI DI PRESSIONE INCROCIATE

WMDL D 40

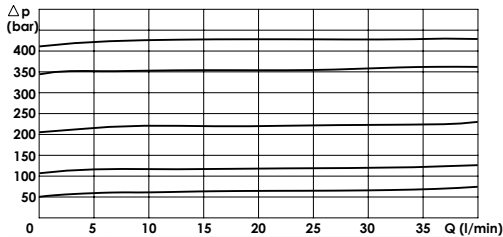
TECHNICAL DATA

- **Flow:** 40 l/min
- **Max setting pressure:** 420 bar
- **Max working pressure:** 250 bar (420 bar)
- **Materials:** Aluminium Body (Steel Body if required)
- **Weight:** 0,700 kg (1,300 kg)



PORTS		
V1 - V2	3/8	1/2
DIMENSIONS		
A	80	90
B	78	90
C	30	35
D	30	36
E	32	40

PRESSURE DROP CURVES



SPRINGS

Code	Adjustable pressure range bar	Pressure increase bar/turn	Standard setting bar
05	5-55	15	5
10	25-110	25	25
20	50-215	50	50
35	100-350	90	100
42	100-420	105	100

ORDERING CODE:

WMDL

D

40

Ports Size:

- 3/8
- 1/2

Material Body:

- Omit if aluminium
- S = Steel

Type of Regulator:

- S = Screw
- V = Handknob

Springs:

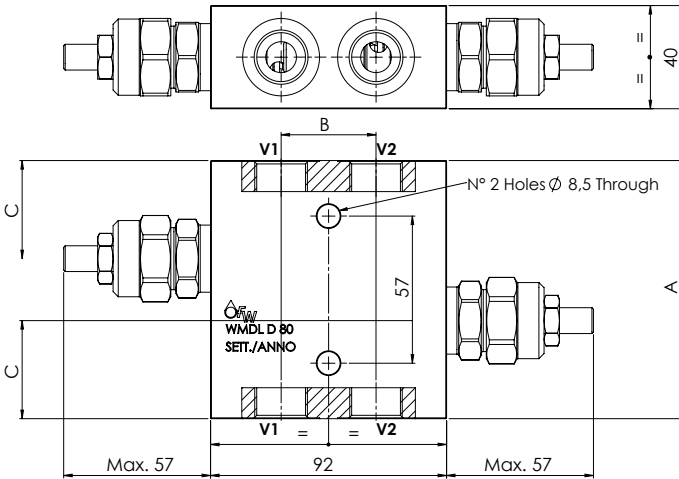
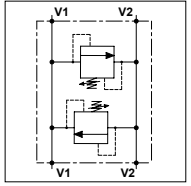
- 05 - 10
- 20 - 35
- 42

Adjustment if Required:
- Omit if not required
- Value

WMDL D 80

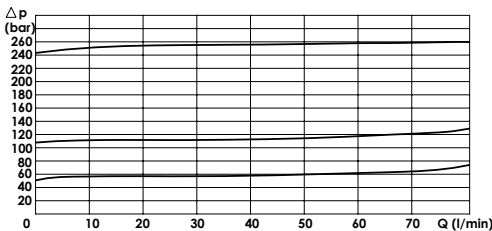
TECHNICAL DATA

- **Flow:** 80 l/min
- **Max setting pressure:** 350 bar
- **Max working pressure:** 250 bar (350 bar)
- **Materials:** Aluminium Body (Steel Body if required)
- **Weight:** 1,500 kg (2,850 kg)



PORTS		
V1 - V2	1/2	3/4
DIMENSIONS		
A	100	110
B	34	40
C	38	42

PRESSURE DROP CURVES



SPRINGS

Code	Adjustable pressure range bar	Pressure increase bar/turn	Standard setting bar
05	5-55	5	5
10	25-250	12	25
25	130-350	30	75

ORDERING CODE:

WMDL

D

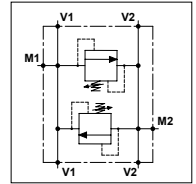
80

- Ports Size:** - 1/2
- 3/4
- Material Body:** - Omit if aluminium
- S = Steel
- Type of Regulator:** - S = Screw
- V = Handknob
- Springs:** - 05 - 10
- 25
- Adjustment if Required:** - Omit if not required
- Value

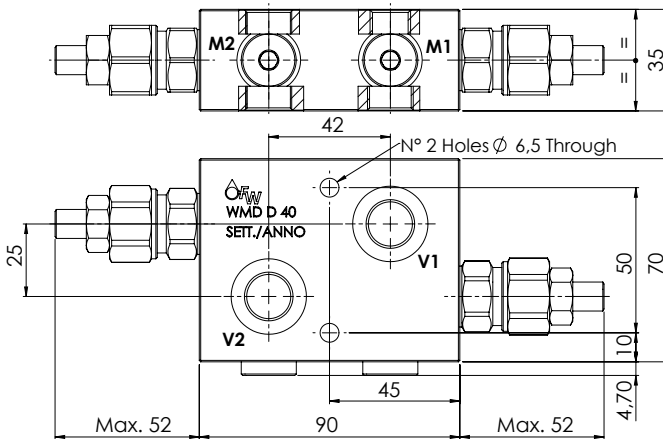
WMD D 40

TECHNICAL DATA

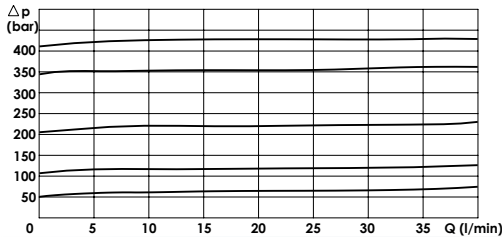
- **Flow:** 40 l/min
- **Max setting pressure:** 420 bar
- **Max working pressure:** 250 bar (420 bar)
- **Materials:** Aluminium Body (Steel Body if required)
- **Weight:** 0,800 kg (1,600 kg)



PORTS		
V1 - V2	3/8	1/2
M1 - M2	1/4	



PRESSURE DROP CURVES



SPRINGS

Code	Adjustable pressure range bar	Pressure increase bar/turn	Standing setting bar
05	5-55	15	5
10	25-110	25	25
20	50-215	50	50
35	100-350	90	100
42	100-420	105	100

ORDERING CODE:

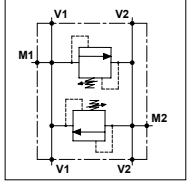


- Ports Size:** - 3/8
- 1/2
- Material Body:** - Omit if aluminium
- S = Steel
- Type of Regulator:** - S = Screw
- V = Handknob
- Springs:** - 05 - 10
- 20 - 35
- 42
- Adjustment if Required:** - Omit if not required
- Value

WMD D 80

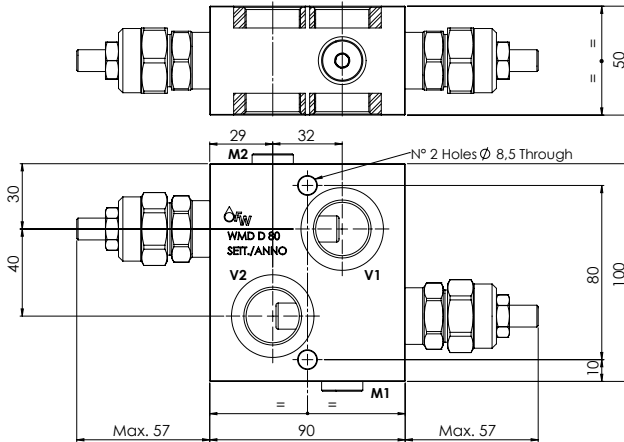
TECHNICAL DATA

- **Flow:** 80 l/min
- **Max setting pressure:** 350 bar
- **Max working pressure:** 250 bar (350 bar)
- **Materials:** Aluminium Body (Steel Body if required)
- **Weight:** 1,700 kg (3,300 kg)

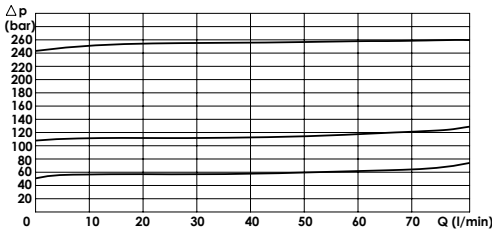


PORTS

V1 - V2	1/2	3/4
M1 - M2	1/4	



PRESSURE DROP CURVES



SPRINGS

Code	Adjustable pressure range bar	Pressure increase bar/turn	Standard setting bar
05	5-55	5	5
10	25-250	12	25
25	130-350	30	75

ORDERING CODE:

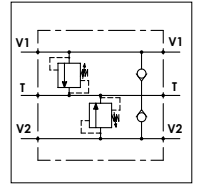


- Ports Size:** - 1/2
- 3/4
- Material Body:** - Omit if aluminium
- S = Steel
- Type of Regulator:** - S = Screw
- V = Handknob
- Springs:** - 05 - 10
- 25
- Adjustment if Required:** - Omit if not required
- Value

WMDL D 40 AC

TECHNICAL DATA

- **Flow:** 40 l/min
- **Max setting pressure:** 420 bar
- **Max working pressure:** 250 bar
- **Materials:** Aluminium Body
- **Version:** Poppet Type - Direct Acting
- **Weight:** 1,100 kg (2,100 kg)

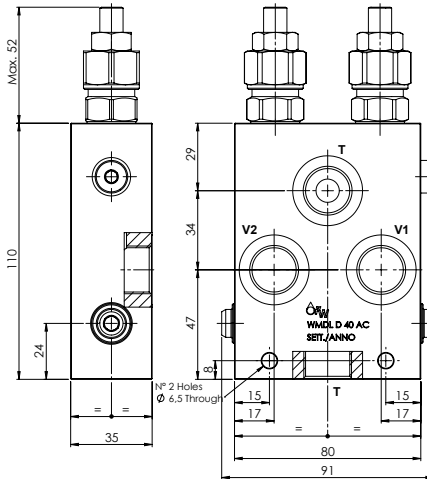


PORTS

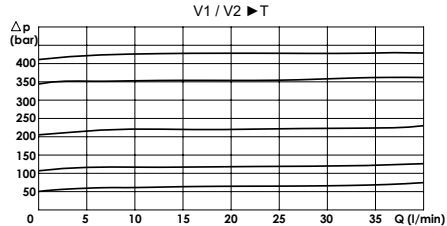
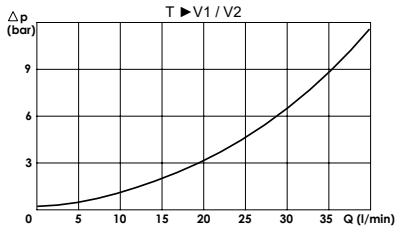
V1 - V2 - T	3/8	1/2
-------------	-----	-----

SPRINGS

Code	Adjustable pressure range bar	Pressure increase bar/turn	Standard setting bar
05	5-55	15	5
10	25-110	25	25
20	50-215	50	50
35	100-350	90	100
42	100-420	105	100



PRESSURE DROP CURVES



ORDERING CODE:

WMDL

D

40

AC

- | | | | |
|--------------------|---------------------------|-----------------|--------------------------------|
| Ports Size: | Type of Regulator: | Springs: | Adjustment if Required: |
| - 3/8 | - S = Screw | - 05 - 10 | - Omit if not required |
| - 1/2 | - V = Handknob | - 20 - 35 | - Value |
| | | - 42 | |