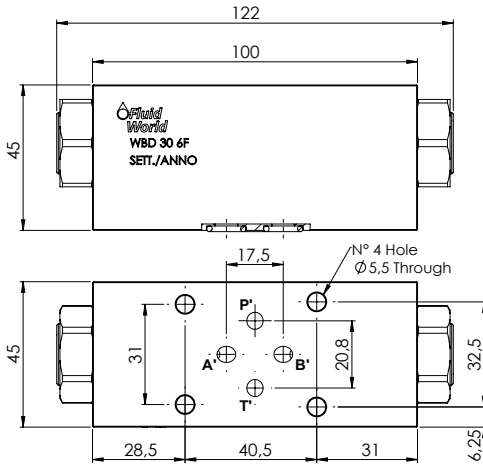
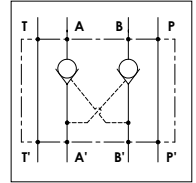


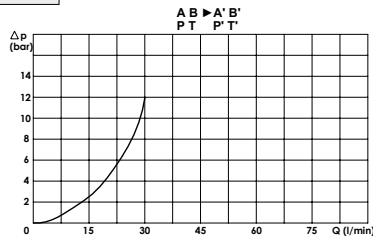
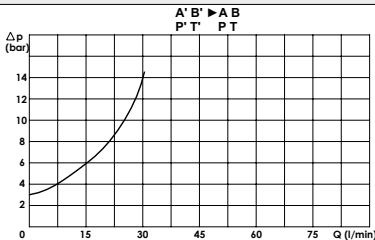
## WBD 30 6F

### TECHNICAL DATA

- **Flow:** 30 l/min
- **Max working pressure:** 250 bar (350 bar)
- **Cracking pressure:** (See table)
- **Materials:** Aluminium Body (Steel body if required)
- **Pilot ratio:** 10:1 (if request 7:1; 4:1)
- **Weight:** 0,670 kg (1,480 kg)



### PRESSURE DROP CURVES



### SPRINGS

Code	Cracking pressure bar
1 Standard	1
2,5	2,5
5	5
10	10

## ORDERING CODE:

WBD

30

6F

#### Material Body:

- Omit if aluminium
- S = Steel

#### Cracking Pressure:

- Omit if 1 bar
- 2,5 = 2,5 bar
- 5 = 5 bar
- 10 = 10 bar

#### Pilot Ratio:

- Omit if 10:1
- 7 = 7:1
- 4 = 4:1

#### Seal on Piston:

- Omit if not required
- G = Required