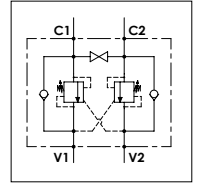


## WOD 60 - 2F A BP

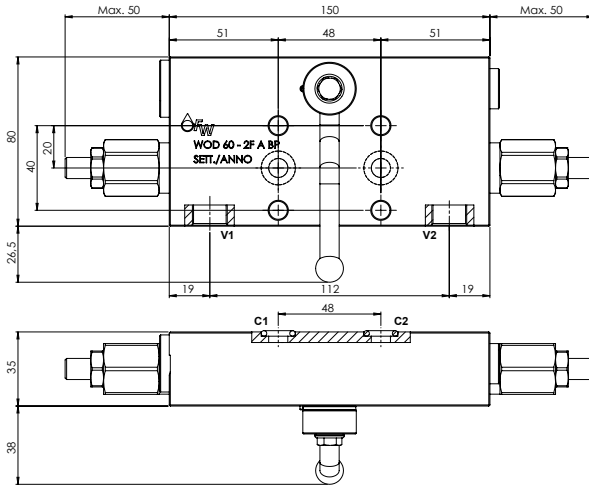
### TECHNICAL DATA

- **Flow:** 60 l/min
- **Max setting pressure:** 250 bar
- **Materials:** Aluminium Body
- **Pilot ratio:** 4:1 (if request 1:1; 8:1; 11:1)
- **Weight:** 1,550 kg

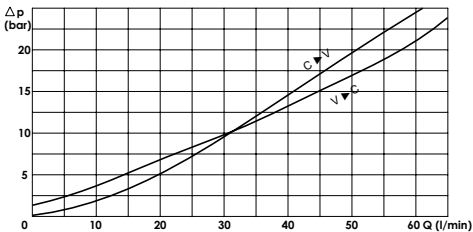
- **Note:** Pressure setting must be 30 % higher that pressure induced by the load



PORTS	
V1 - V2	3/8
C1 - C2	ø9



### PRESSURE DROP CURVES



### SPRINGS

Code	20			35		
	Adjustable pressure range bar	Pressure increase bar/turn	Standard setting bar	Adjustable pressure range bar	Pressure increase bar/turn	Standard setting bar
1:1	10-70	15	10	30-200	25	30
4:1	60-210	70	170	80-350	120	280
8:1	60-220	50		100-350	85	
11:1	60-250	90		80-350	150	

## ORDERING CODE:



- Springs:**
- 20
  - 35
- Pilot Ratio:**
- Omit if 4:1
  - 1 = 1:1
  - 8 = 8:1
  - 11 = 11:1
- Adjustment if Required:**
- Omit if not required
  - Value