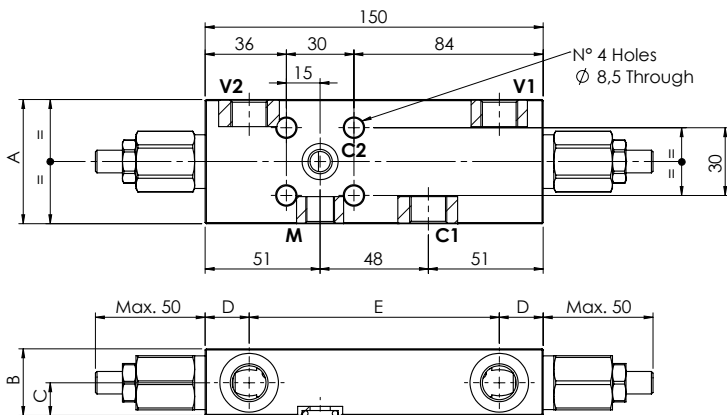
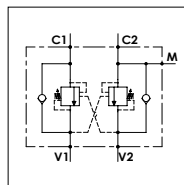


### WOD 60 - 1F

#### TECHNICAL DATA

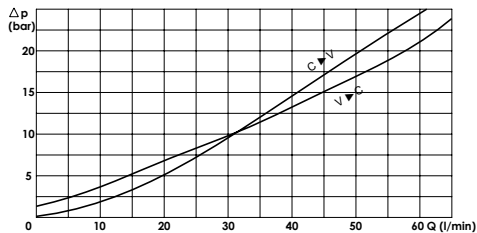
- Flow:** 60 l/min
- Max setting pressure:** 350 bar
- Materials:** Steel Body
- Pilot ratio:** 4:1 (if request 1:1; 8:1; 11:1)
- Weight:** (See Table)

- Note:** Pressure setting must be 30 % higher that pressure induced by the load



PORTS		
C1 V1 - V2	3/8	1/2
C2	ø9	
M	1/4	
DIMENSIONS		
A	55	65
B	29,5	34,5
C	14,5	17
D	19	18
E	112	114
Weight (kg)	1,700	2,100

#### PRESSURE DROP CURVES



#### SPRINGS

Code	20			35		
	Adjustable pressure range bar	Pressure increase bar/turn	Standard setting bar	Adjustable pressure range bar	Pressure increase bar/turn	Standard setting bar
1:1	10-70	15	170	30-200	25	30
4:1	60-210	70		80-350	120	
8:1	60-220	50		100-350	85	
11:1	60-250	90		80-350	150	

### ORDERING CODE:

WOD

60



**Ports Size:**  
- 3/8  
- 1/2

1F



**Springs:**  
- 20  
- 35



**Pilot Ratio:**  
- Omit if 4:1  
- 1 = 1:1  
- 8 = 8:1  
- 11 = 11:1



**Adjustment if Required:**  
- Omit if not required  
- Value