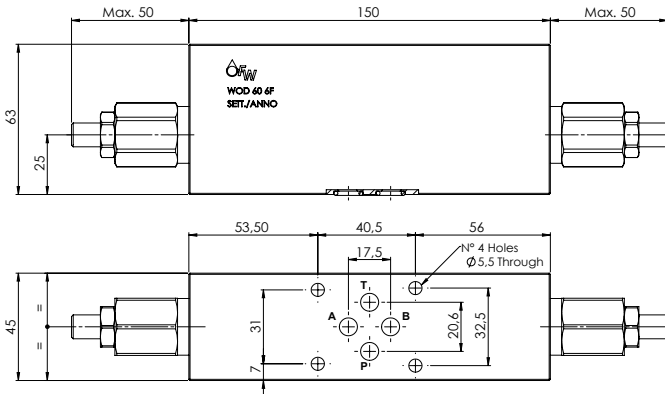
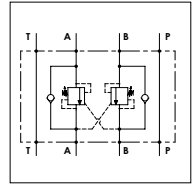


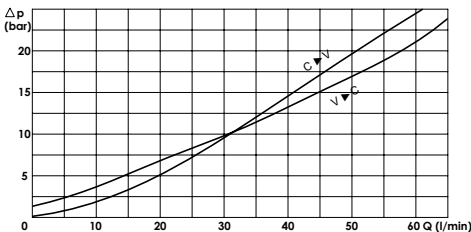
WOD 60 6F

TECHNICAL DATA

- **Flow:** 60 l/min
 - **Max setting pressure:** 350 bar (250 bar)
 - **Materials:** Steel Body (Aluminium body if required)
 - **Pilot ratio:** 4:1 (if request 1:1; 8:1; 11:1)
 - **Weight:** 3,350 kg (1,560 kg)
- **Note:** Pressure setting must be 30 % higher that pressure induced by the load



PRESSURE DROP CURVES



SPRINGS

Code	20			35		
	Adjustable pressure range bar	Pressure increase bar/turn	Standard setting bar	Adjustable pressure range bar	Pressure increase bar/turn	Standard setting bar
1:1	10-70	15	10	30-200	25	30
4:1	60-210	70	170	80-350	120	280
8:1	60-220	50		100-350	85	
11:1	60-250	90		80-350	150	

ORDERING CODE:

WOD

60

6F

Material Body:
- Omit if steel
- A = Aluminium

Springs:
- 20
- 35

Pilot Ratio:
- Omit if 4:1
- 1 = 1:1
- 8 = 8:1
- 11 = 11:1

Adjustment if Required:
- Omit if not required
- Value