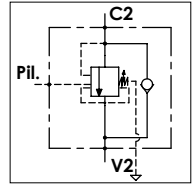


## WOSFC 30 - L PE

### TECHNICAL DATA

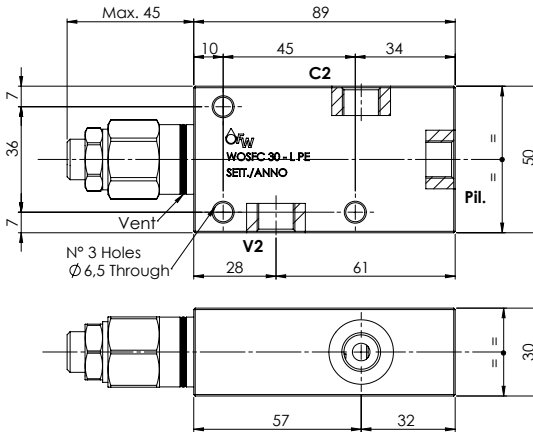
- **Flow:** 30 l/min
- **Max setting pressure:** 350 bar
- **Materials:** Steel Body
- **Pilot ratio:** 4:1 (if request 8:1; 11:1)
- **Weight:** 1,100 kg

- **Note:** - Pressure setting must be 30 % higher that pressure induced by the load.  
- Recommended for use with closed center spools.

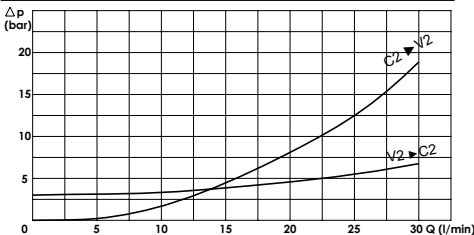


PORTS	
C2 - V2 Pil.	1/4

Possibility 3/8 ports.  
Please contact our sales department.



### PRESSURE DROP CURVES



### SPRINGS

Code	20			35		
	Adjustable pressure range bar	Pressure increase bar/turn	Standard setting bar	Adjustable pressure range bar	Pressure increase bar/turn	Standard setting bar
4:1	60-210	70	170	80-350	120	280
8:1	60-220	50		100-350	85	
11:1	60-250	90		80-350	150	

## ORDERING CODE:

WOSFC	30		L	PE	1/4			
<b>Ports Size:</b>			<b>Springs:</b>			<b>Pilot Ratio:</b>		
- 1/4			- 20			- Omit if 4:1		
- 3/8			- 35			- 8 = 8:1		
						- 11 = 11:1		
						<b>Adjustment if Required:</b>		
						- Omit if not required		
						- Value		