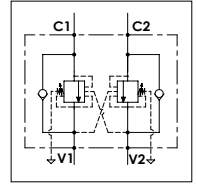


WODFC 30 - L A

TECHNICAL DATA

- Flow:** 30 l/min
- Max setting pressure:** 250 bar
- Materials:** Aluminium Body
- Pilot ratio:** 4:1 (if request 8:1; 11:1)
- Weight:** 0,850 kg

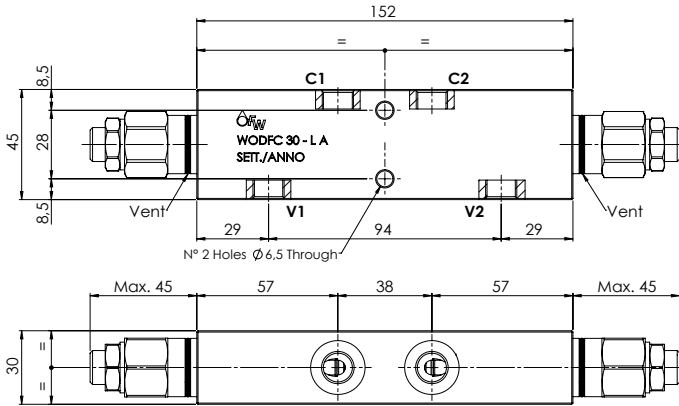
- Note:** - Pressure setting must be 30 % higher that pressure induced by the load.
- Recommended for use with closed center spools.



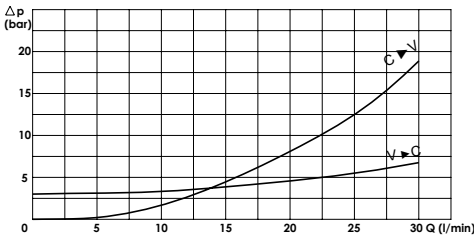
PORTS

C1 - C2
V1 - V2

1/4



PRESSURE DROP CURVES



SPRINGS

| Code | 20 | | | 35 | | |
|-------------|-------------------------------|----------------------------|----------------------|-------------------------------|----------------------------|----------------------|
| Pilot ratio | Adjustable pressure range bar | Pressure increase bar/turn | Standard setting bar | Adjustable pressure range bar | Pressure increase bar/turn | Standard setting bar |
| 4:1 | 60-210 | 70 | 170 | 80-350 | 120 | 280 |
| 8:1 | 60-220 | 50 | | 100-350 | 85 | |
| 11:1 | 60-250 | 90 | | 80-350 | 150 | |

ORDERING CODE:

WODFC

30

1/4

L

A

Springs:

- 20
- 35

Pilot Ratio:

- Omit if 4:1
- 8 = 8:1
- 11 = 11:1

Adjustment if Required:

- Omit if not required
- Value