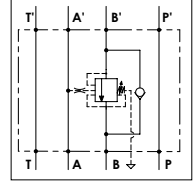
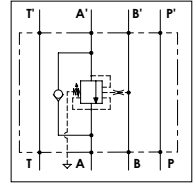
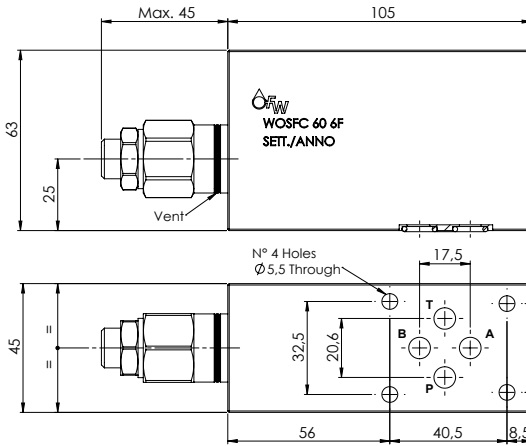


WOSFC 60 6F

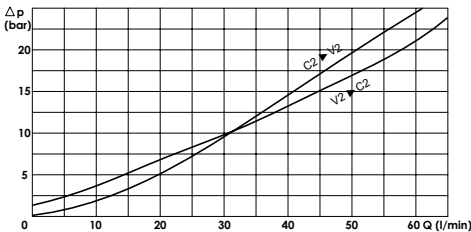
TECHNICAL DATA

- **Flow:** 60 l/min
- **Max setting pressure:** 350 bar (250 bar)
- **Materials:** Steel Body (Aluminium body if required)
- **Pilot ratio:** 4:1 (if request 1:1; 8:1; 11:1)
- **Weight:** 1,600 kg (0,750 kg)

- **Note:** - Pressure setting must be 30 % higher that pressure induced by the load.
- Recommended for use with closed center spools.



PRESSURE DROP CURVES



SPRINGS

Code	20			35		
	Adjustable pressure range bar	Pressure increase bar/turn	Standard setting bar	Adjustable pressure range bar	Pressure increase bar/turn	Standard setting bar
1:1	10-70	15	10	30-200	25	30
4:1	60-210	70	170	80-350	120	280
8:1	60-220	50		100-350	85	
11:1	60-250	90		80-350	150	

ORDERING CODE:

WOSFC	60	6F					
Material Body:	Setting Up:	Springs:	Pilot Ratio:	Adjustment if Required:			
- Omit if steel	- A	- 20	- Omit if 4:1	- Omit if not required			
- A = Aluminium	- B	- 35	- 1 = 1:1	- Value			
			- 8 = 8:1				
			- 11 = 11:1				