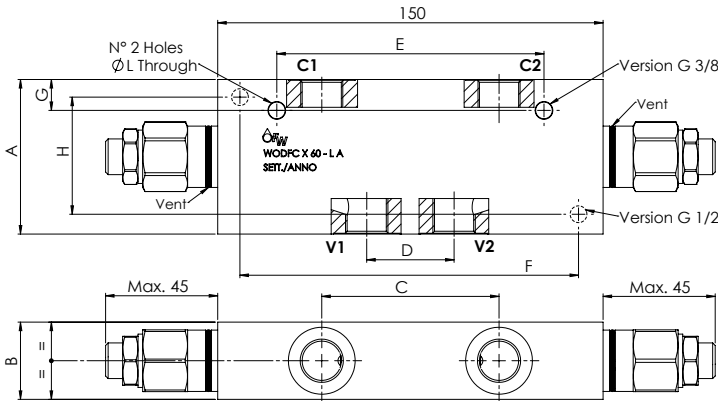
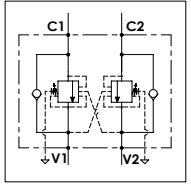


WODFC X 60 - L A

TECHNICAL DATA

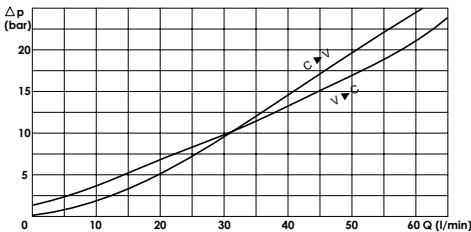
- Flow:** 60 l/min
- Max setting pressure:** 250 bar
- Materials:** Aluminium Body
- Pilot ratio:** 4:1 (if request 1:1; 8:1; 11:1)
- Weight:** (See Table)

- Note:** - Pressure setting must be 30 % higher that pressure induced by the load.
- Recommended for use with closed center spools.



PORTS		
C1 - C2 V1 - V2	3/8	1/2
DIMENSIONS		
A	60	70
B	30	35
C	69	80
D	34	36
E	104	-
F	-	125
G	12	-
H	-	54
L	6,5	8,5
Weight (kg)	1,020	1,255

PRESSURE DROP CURVES



SPRINGS

Code	20			35		
	Adjustable pressure range bar	Pressure increase bar/turn	Standard setting bar	Adjustable pressure range bar	Pressure increase bar/turn	Standard setting bar
1:1	10-70	15	10	30-200	25	30
4:1	60-210	70	170	80-350	120	280
8:1	60-220	50		100-350	85	
11:1	60-250	90		80-350	150	

ORDERING CODE:

WODFC	X	60		L	A				
			Ports Size:				Springs:	Pilot Ratio:	Adjustment if Required:
			- 3/8				- 20	- Omit if 4:1	- Omit if not required
			- 1/2				- 35	- 1 = 1:1	- 8 = 8:1
								- 11 = 11:1	- Value