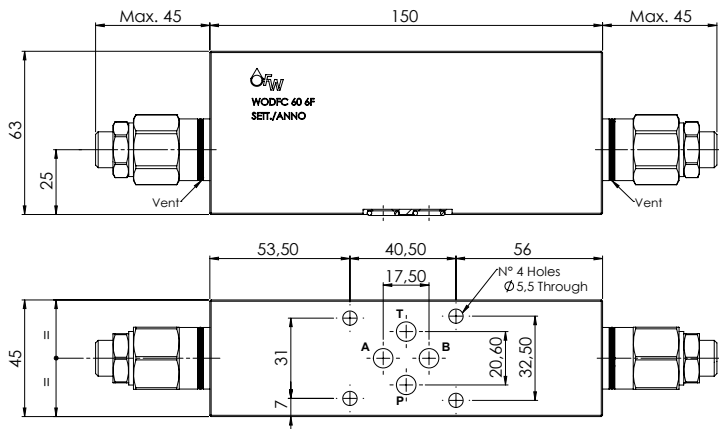
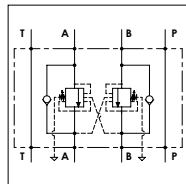


### WODFC 60 6F

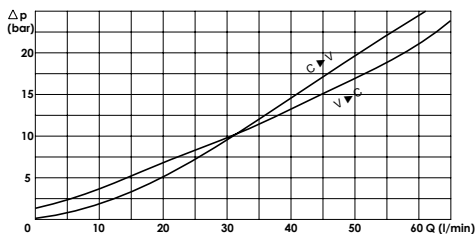
#### TECHNICAL DATA

- **Flow:** 60 l/min
- **Max setting pressure:** 350 bar (250 bar)
- **Materials:** Steel Body (Aluminium body if required)
- **Pilot ratio:** 4:1 (if request 1:1; 8:1; 11:1)
- **Weight:** 3,350 kg (1,560 kg)

- **Note:** - Pressure setting must be 30 % higher that pressure induced by the load.  
- Recommended for use with closed center spools.



#### PRESSURE DROP CURVES



#### SPRINGS

Code	20			35		
	Adjustable pressure range bar	Pressure increase bar/turn	Standard setting bar	Adjustable pressure range bar	Pressure increase bar/turn	Standard setting bar
1:1	10-70	15	10	30-200	25	30
4:1	60-210	70	170	80-350	120	280
8:1	60-220	50		100-350	85	
11:1	60-250	90		80-350	150	

### ORDERING CODE:

WODFC

60

6F

**Material Body:**  
- Omit if steel  
- A = Aluminium

**Springs:**  
- 20  
- 35

**Pilot Ratio:**  
- Omit if 4:1  
- 1 = 1:1  
- 8 = 8:1  
- 11 = 11:1

**Adjustment if Required:**  
- Omit if not required  
- Value