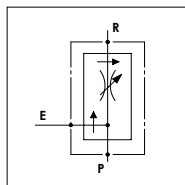


WPR C 50

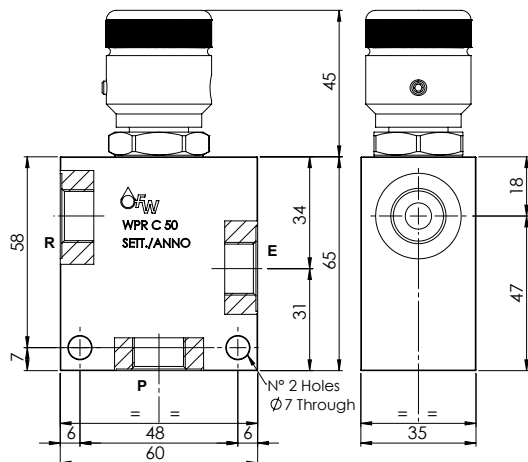
TECHNICAL DATA

- **Flow:** 50 l/min with 30 l/min in R
- **Max working pressure:** 250 bar (350 bar)
- **Materials:** Aluminium Body (Steel body if required)
- **Version:** Exceeding Flow in Pressure
- **Optional Kit:** Length ordering 500 mm multiple
- **Weight:** 0,500 kg (1,050 kg)

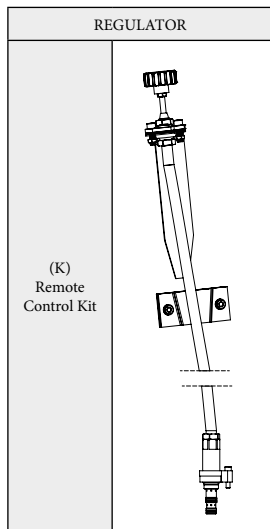
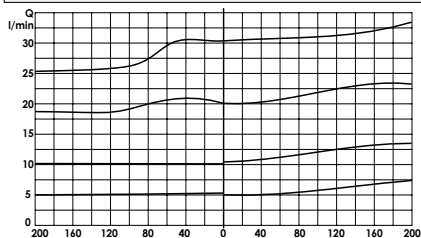


PORTS

P - E - R	3/8	1/2
-----------	-----	-----



COMPENSATION CURVES



ORDERING CODE:

WPR

C

50

Ports Size:

- 3/8
- 1/2

Material Body:

- Omit if aluminium
- S = Steel

Remote Control Kit:

- Omit if not required
- K = Kit

Length Kit:

- Omit if not required
- Value