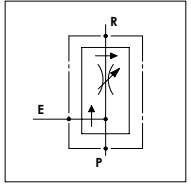


WPR C 90

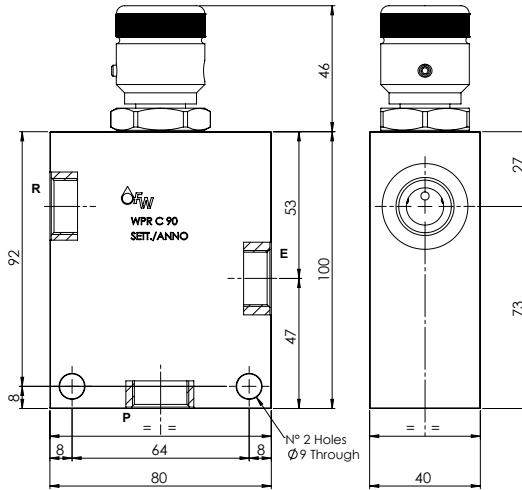
TECHNICAL DATA

- **Flow:** 90 l/min with 50 l/min in R
- **Max working pressure:** 250 bar (350 bar)
- **Materials:** Aluminium Body (Steel body if required)
- **Version:** Exceeding Flow in Pressure
- **Optional Kit:** Length ordering 500 mm multiple
- **Weight:** 1,070 kg (2,350 kg)

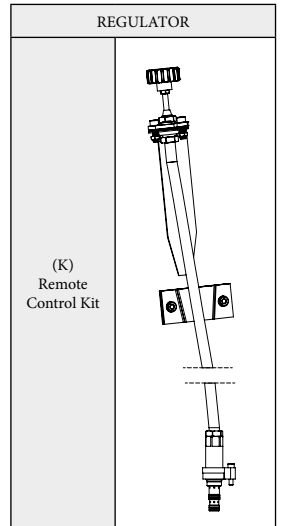
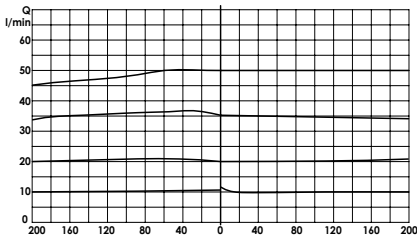


PORTS

P - E - R	1/2	3/4
-----------	-----	-----



COMPENSATION CURVES



ORDERING CODE:

WPR

C

90

Ports Size:

- 1/2
- 3/4

Material Body:

- Omit if aluminium
- S = Steel

Remote Control Kit:

- Omit if not required
- K = Kit

Length Kit:

- Omit if not required
- Value