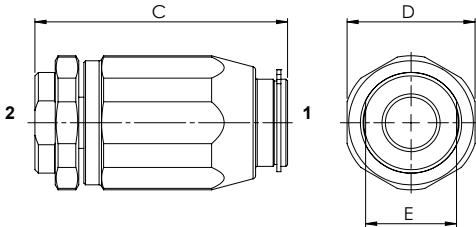
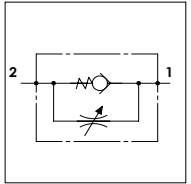


WFU M

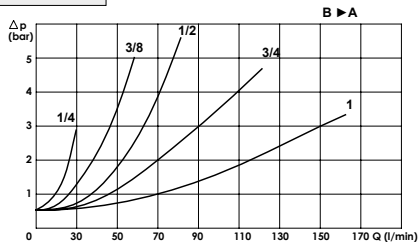
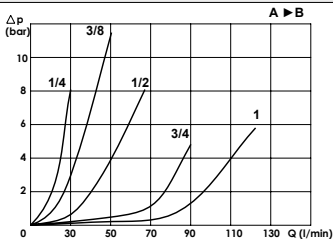
TECHNICAL DATA

- **Flow:** (See table)
- **Max working pressure:** (See table)
- **Cracking pressure:** 0,5 bar
- **Materials:** Steel Body
- **Weight:** (See table)



PORTS					
A - B	1/4	3/8	1/2	3/4	1
DIMENSIONS					
C	65	75	80	101	115
D	32	38	41	55	65
E	22	27	30	38	46
Max Pressure (bar)	350	350	350	300	250
Max Flow (l/min) A►B	30	40	50	80	110
Max Flow (l/min) B►A	30	50	80	110	160
Weight (kg)	0,290	0,460	0,570	1,800	2,100

PRESSURE DROP CURVES



ORDERING CODE:

WFU

M

Ports Size:
 - 1/4 - 3/8
 - 1/2 - 3/4
 - 1