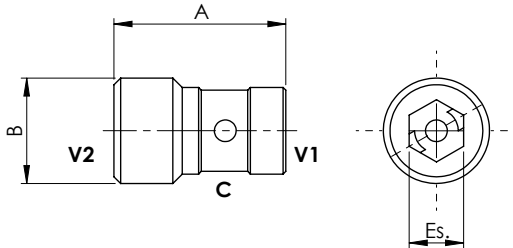
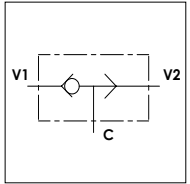


# WS I

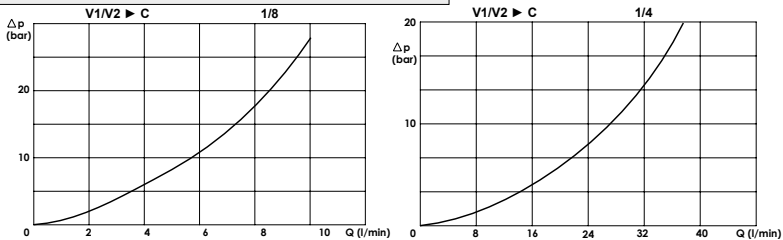
## TECHNICAL DATA

- **Flow:** (See table)
- **Max working pressure:** 350 bar
- **Materials:** Steel Body
- **Version:** Ball Type
- **Cavity:** (See table)
- **Weight:** (See table)



PORTS		
B	1/8	1/4
DIMENSIONS		
A	14,9	22,5
Es.	5	6
Max Flow (l/min)	10	35
Cavity	FW1803100	FW1403100
Weight (kg)	0,010	0,040

## PRESSURE DROP CURVES



## ORDERING CODE:

WS

I

Ports Size:  
- 1/8 - 1/4