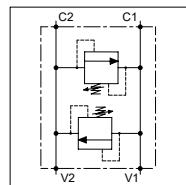
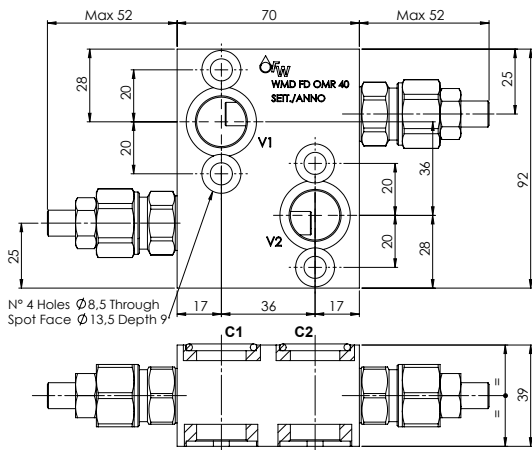


WMD FD OMR 40

TECHNICAL DATA

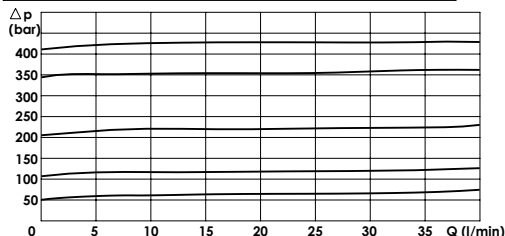
- **Flow:** 40 l/min
- **Max setting pressure:** 420 bar
- **Max working pressure:** 250 bar (420 bar)
- **Materials:** Aluminium Body (Steel body if required)
- **Note:** Flangeable on Danfoss motors OMP/R/H
- **Weight:** 0,850 kg (1,800 kg)



PORTS

C1 - C2	ø19
V1 - V2	1/2

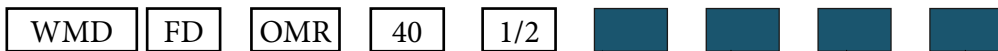
PRESSURE DROP CURVES



SPRINGS

Code	Adjustable pressure range bar	Pressure increase bar/turn	Standard setting bar
05	5-55	15	5
10	25-110	25	25
20	50-215	50	50
35	100-350	90	100
42	100-420	105	100

ORDERING CODE:



- Material Body:** - Omit if aluminium - S = Steel
Type of Regulator: - S = Screw - V = Handknob
Springs: -05 -10 -20 -35 -42
Adjustment if Required: - Omit if not required - Value