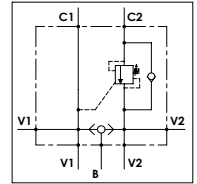


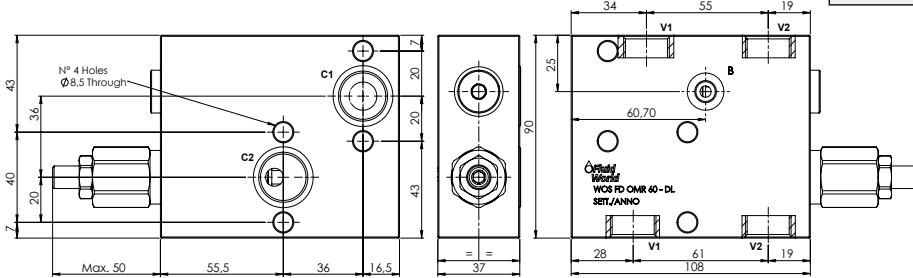
## WOS FD OMR 60 - DL

### TECHNICAL DATA

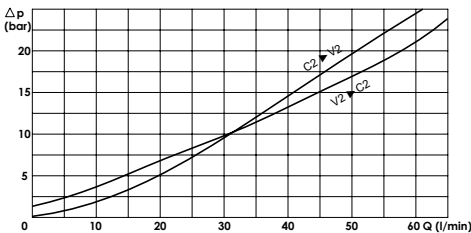
- **Flow:** 60 l/min
- **Max setting pressure:** 350 bar
- **Max working pressure:** 250 bar (350 bar)
- **Materials:** Aluminium Body (Steel body if required)
- **Pilot ratio:** 4:1 (if request 8:1; 11:1)
- **Note:** Flangeable on Danfoss motors OMP/R/H
- **Weight:** 1,220 kg (2,670 kg)



PORTS	
V1 - V2	1/2
B	1/8
C1 - C2	ø8,5



### PRESSURE DROP CURVES



### SPRINGS

Code	20			35		
	Adjustable pressure range bar	Pressure increase bar/turn	Standard setting bar	Adjustable pressure range bar	Pressure increase bar/turn	Standard setting bar
1:1	10-70	15	10	30-200	25	30
4:1	60-210	70	170	80-350	120	280
8:1	60-220	50		100-350	85	
11:1	60-250	90		80-350	150	

## ORDERING CODE:

WOS FD OMR 60 1/2 DL

### Material Body:

- Omit if aluminium
- S = Steel

### Springs: Pilot Ratio:

- 20 - Omit if 4:1
- 35 - 1 = 1:1
- 8 = 8:1
- 11 = 11:1

### Adjustment if Required:

- Omit if not required
- Value