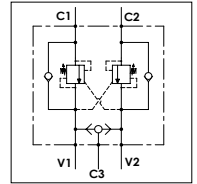


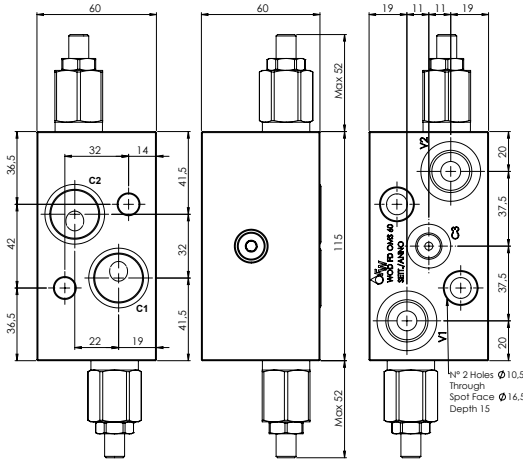
WOD FD OMS 60

TECHNICAL DATA

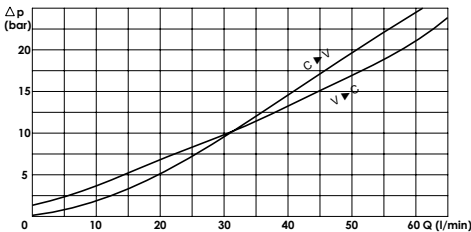
- **Flow:** 60 l/min
- **Max setting pressure:** 350 bar
- **Max working pressure:** 250 bar (350 bar)
- **Materials:** Aluminium Body (Steel body if required)
- **Note:** Flangeable on Danfoss motors OMS/T/V
- **Weight:** 1,350 kg (3,050 kg)



PORTS		
V1 - V2	3/8	1/2
C3	1/4	
C1 - C2	ø8,5	



PRESSURE DROP CURVES



SPRINGS

Code	20			35		
	Adjustable pressure range bar	Pressure increase bar/turn	Standard setting bar	Adjustable pressure range bar	Pressure increase bar/turn	Standard setting bar
1:1	10-70	15	10	30-200	25	30
4:1	60-210	70	170	80-350	120	280
8:1	60-220	50		100-350	85	
11:1	60-250	90		80-350	150	

ORDERING CODE:



- Ports Size:** - 3/8
- 1/2
- Material Body:** - Omit if aluminium
- S = Steel
- Springs:** - 20
- 35
- Pilot Ratio:** - Omit if 4:1
- 1 = 1:1
- 8 = 8:1
- 11 = 11:1
- Adjustment if Required:** - Omit if not required
- Value