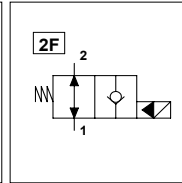
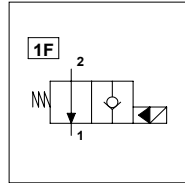


WST S08 NA - L

TECHNICAL DATA

- **Flow:** 30 l/min
- **Max working pressure:** 300 bar
- **Materials:** Cartridge in Steel zinc plated
- **Version:** Poppet Type - Pilot Acting
- **Cavity:** FW3402000
- **Installation torque:** 30 Nm
- **Weight:** 0,120 kg

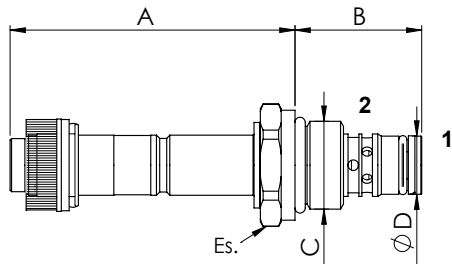


PORTS

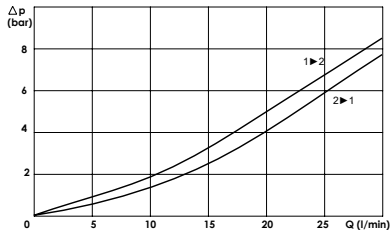
Size	S08
------	-----

DIMENSIONS

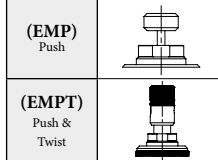
A	61,8
B	27,5
C	3/4-16UNF
D	12,7
Es.	24



PRESSURE DROP CURVES



MANUAL OVERRIDE



ORDERING CODE:

WST

S08

NA

L

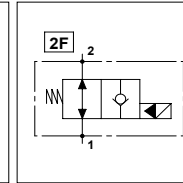
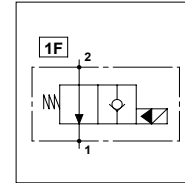
Type of Scheme:
- Omit for scheme 1F
- 2F = Scheme 2F

Manual Override:
- Omit if not required
- EMP = Push
- EMPT = Push & Twist

WST S08 NA - L

TECHNICAL DATA

- **Flow:** 30 l/min
- **Max working pressure:** 250 bar (300 bar)
- **Materials:** Aluminium Body (Steel body if required)
- **Version:** Poppet Type - Pilot Acting
- **Note:** Coil on the page 260 or 261

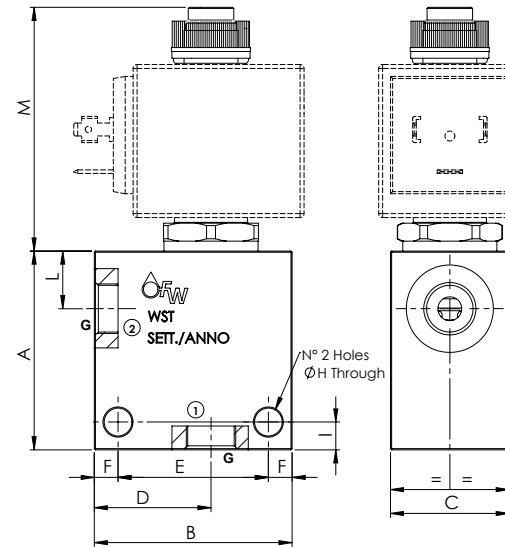


PORTS

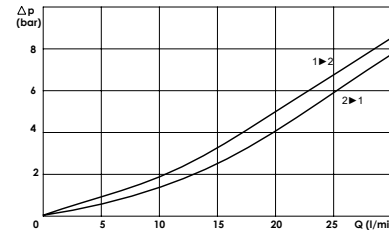
Size	S08
------	-----

DIMENSIONS

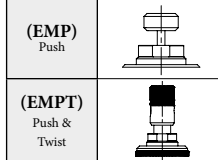
G	1/4 3/8
DIMENSIONS	
A	50
B	50
C	30
D	30
E	38
F	6
H	7
I	7
L	14,5
M	61,3



PRESSURE DROP CURVES



MANUAL OVERRIDE



ORDERING CODE:

WST

S08

NA

L

Type of Scheme:
- Omit for scheme 1F
- 2F = Scheme 2F

Manual Override:
- Omit if not required
- EMP = Push
- EMPT = Push & Twist

Ports Size:
- 1/4 ; 3/8

Material Body: (Only for S08):
- Omit if steel not required
- A = Aluminium
- B
- EMS

Rated Voltage Coil:
- Omit if not required
- 12
- 24