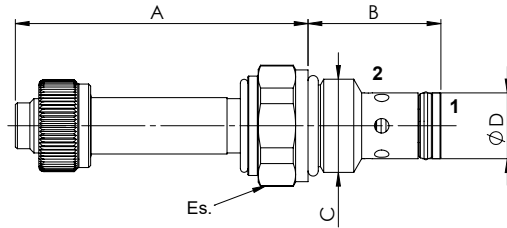
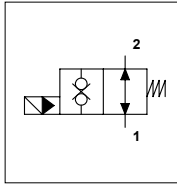


WDT - NA

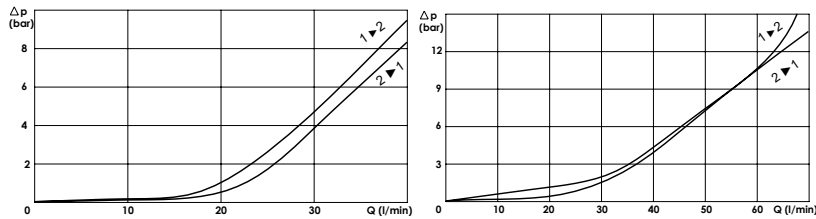
TECHNICAL DATA

- **Flow:** (See table)
- **Max working pressure:** 350 bar
- **Materials:** Cartridge in Steel zinc plated
- **Version:** Poppet Type - Pilot Acting
- **Cavity:** (See table)
- **Installation torque:** (See table)
- **Weight:** (See table)

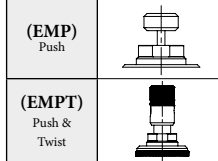


PORTS		
Size	S08	S10
DIMENSIONS		
A	71,2	68,8
B	27,6	32
C	3/4-16UNF	7/8-14UNF
D	12,7	15,8
Es.	24	27
Max Flow (l/min)	40	70
Cavity	FW3402000	FW7802000
Installation torque (Nm)	30	40
Weight (kg)	0,150	0,190

PRESSURE DROP CURVES



MANUAL OVERRIDE



ORDERING CODE:

WDT

NA

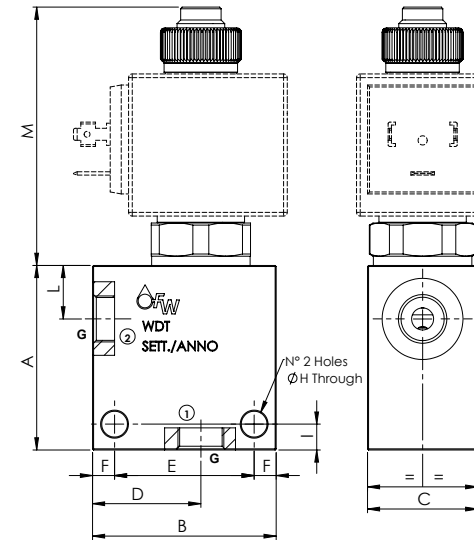
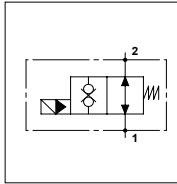
- Ports Size:**
- S08 = SAE 08/2
 - S10 = SAE 10/2

- Manual Override:**
- Omit if not required
 - EMP = Push
 - EMPT = Push & Twist

WDT - NA

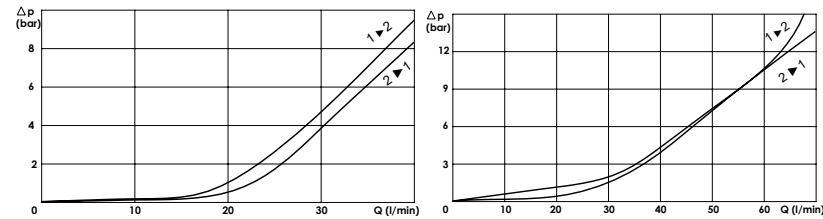
TECHNICAL DATA

- **Flow:** (See table)
- **Max working pressure:** 250 bar (350 bar)
- **Materials:** Aluminium Body (Steel body if required)
- **Version:** Poppet Type - Pilot Acting
- **Note:** Coil on the page 261

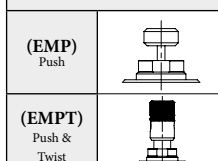


PORTS		
Size	S08	S10
G	1/4	1/2
	3/8	
DIMENSIONS		
A	50	56
B	50	60
C	30	35
D	30	35
E	38	48
F	6	6
H	7	7
I	7	7
L	14,5	18,5
M	70,7	68,3
Max Flow (l/min)	40	70

PRESSURE DROP CURVES



MANUAL OVERRIDE



ORDERING CODE:

WDT

NA

- Ports Size:**
- S08 = SAE 08/2
 - S10 = SAE 10/2

- Manual Override:**
- Omit if not required
 - EMP = Push
 - EMPT = Push & Twist

- Ports Size:**
- 1/4 ; 3/8
 - 1/2

- Material Body:**
- Omit if steel
 - A = Aluminium

- Optional Body (Only for S08):**
- Omit if not required
 - B
 - EMS

- Rated Voltage Coil:**
- Omit if not required
 - 12
 - 24