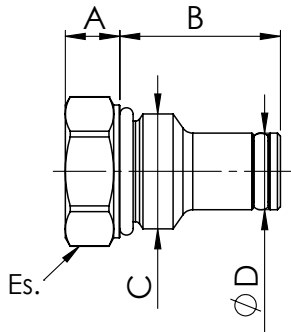


## 3XTP

### TECHNICAL DATA

- **Materials:** Steel Zinc Plated
- **Cavity:** (See Table)
- **Installation torque:** (See Table)
- **Weight:** (See Table)
- **Note:** O-Ring is included



DIMENSIONS							
C	A	B	D	Es.	Code Cavity SAE	Install. Torque (N/m)	Weight (Kg)
3/4-16-UNF	10,5	26,5	12,7	22	FW3402000	40-45	0,070
7/8-14-UNF	9,6	32,4	15,86	27	FW7802000	55-65	0,120

## ORDERING CODE:

3XTP

02

100

**Cavities:**

- 08 = SAE 08
- 10 = SAE 10