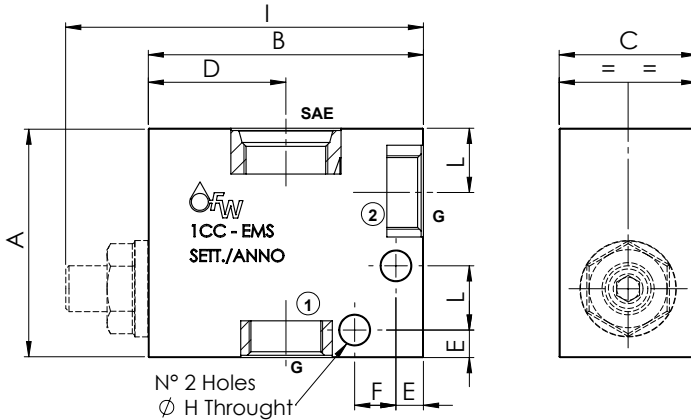
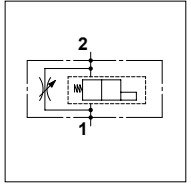


ICC - EMS

TECHNICAL DATA

- **Max working pressure:** 250 bar (350 bar)
- **Materials:** Aluminium Body (Steel body if required)
- **Note:** Screw and nut not included with code 3 and 5, complete of components with code 7 and 9



DIMENSIONS

SAE	G	A	B	C	D	E	F	H	I	L	Code Cavity SAE
08	3/8	50	60	30	30	6	9	6,5	78	14	FW3402000

ORDERING CODE:

ICC

08

02

38

For body with SAE 10 and SAE 12,
 Please contact our sales department.

Material Body:

- 3 = Aluminium
- 5 = Steel
- 7 = Aluminium Complete
- 9 = Steel Complete