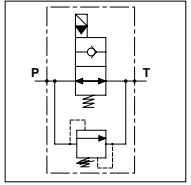


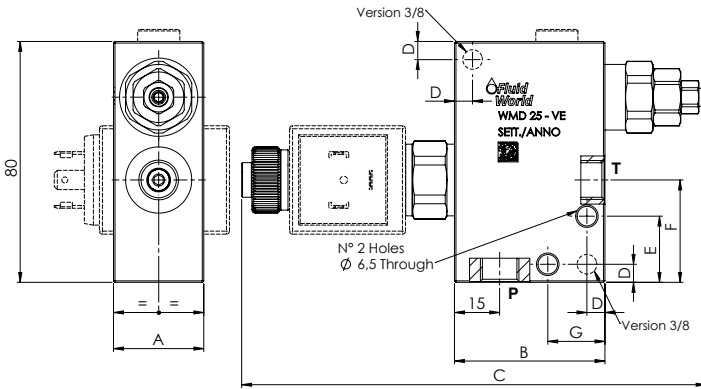
## WMD 25 - VE

### TECHNICAL DATA

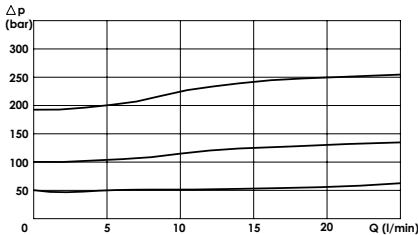
- **Flow:** 25 l/min
- **Max working pressure:** 250 bar
- **Materials:** Aluminium Body
- **Note:** The Coil is not included
- **Weight:** 0,700 kg



PORTS		
P - T	1/4	3/8
DIMENSIONS		
A	30	35
B	50	55
C	154	159
D	6	6
E	22	-
F	34	30
G	19	-



### PRESSURE DROP CURVES



### SPRINGS

Code	Adjustable pressure range bar	Pressure increase bar/turn	Standard setting bar
05	20-70	10	20
20	50-180	25	50
35	130-350	60	130

## ORDERING CODE:

WMD	25		VE		S		
<b>Ports Size:</b>		<b>Type of VE:</b>		<b>Springs:</b>		<b>Adjustment if Required:</b>	
- 1/4 - 3/8		- NA - NC		- 05 - 20 - 35		- Omit if not required - Value	