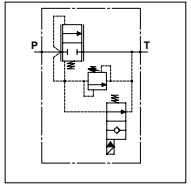


WMD 200 - VE

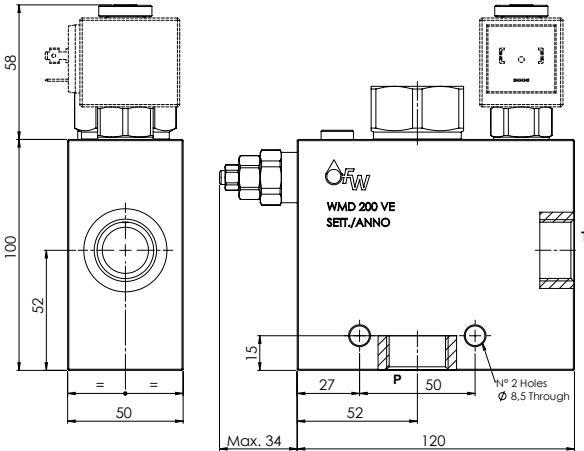
TECHNICAL DATA

- **Flow:** 200 l/min
- **Max working pressure:** 250 bar
- **Materials:** Aluminium Body
- **Note:** The Coil is not included
- **Weight:** 2,100 kg

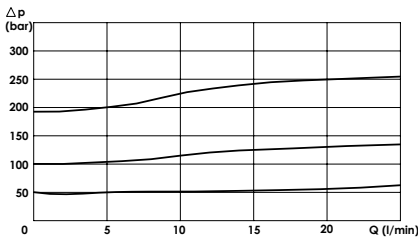


PORTS

P - T	3/4	1
-------	-----	---



PRESSURE DROP CURVES



SPRINGS

Code	Adjustable pressure range bar	Pressure increase bar/turn	Standard setting bar
05	20-70	10	20
20	50-180	25	50
35	130-350	60	130

ORDERING CODE:



Ports Size:

- 3/4
- 1

Type of VE:

- NA
- NC

Springs:

- 05
- 20
- 35

Adjustment if Required:

- Omit if not required
- Value