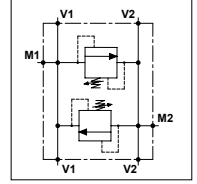


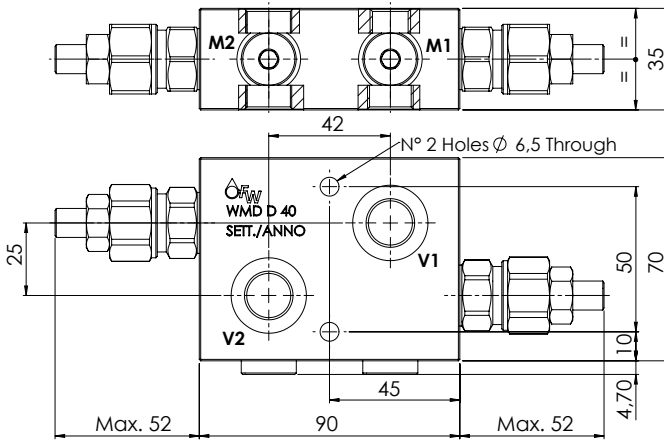
WMD D 40

TECHNICAL DATA

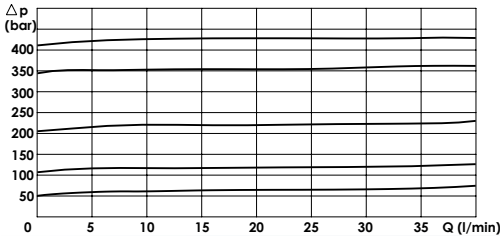
- Flow:** 40 l/min
- Max setting pressure:** 420 bar
- Max working pressure:** 250 bar (420 bar)
- Materials:** Aluminium Body (Steel Body if required)
- Weight:** 0,800 kg (1,600 kg)



PORTS		
V1 - V2	3/8	1/2
M1 - M2	1/4	



PRESSURE DROP CURVES



SPRINGS

Code	Adjustable pressure range bar	Pressure increase bar/turn	Standing setting bar
05	5-55	15	5
10	25-110	25	25
20	50-215	50	50
35	100-350	90	100
42	100-420	105	100

ORDERING CODE:



- Ports Size:** - 3/8
- 1/2
- Material Body:** - Omit if aluminium
- S = Steel
- Type of Regulator:** - S = Screw
- V = Handknob
- Springs:** - 05 - 10
- 20 - 35
- 42
- Adjustment if Required:** - Omit if not required
- Value