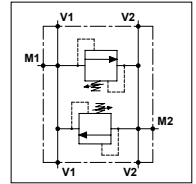


WMD D 80

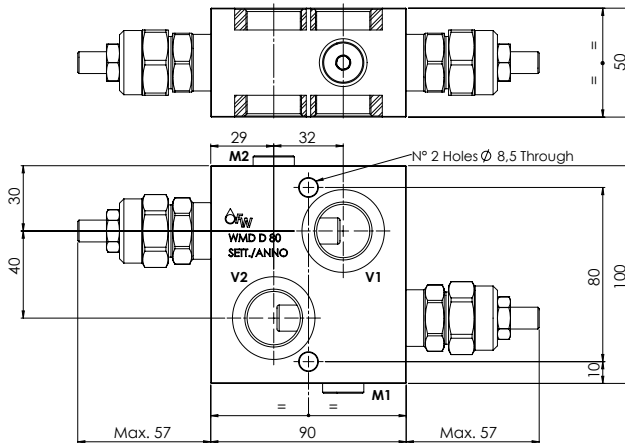
TECHNICAL DATA

- **Flow:** 80 l/min
- **Max setting pressure:** 350 bar
- **Max working pressure:** 250 bar (350 bar)
- **Materials:** Aluminium Body (Steel Body if required)
- **Weight:** 1,700 kg (3,300 kg)

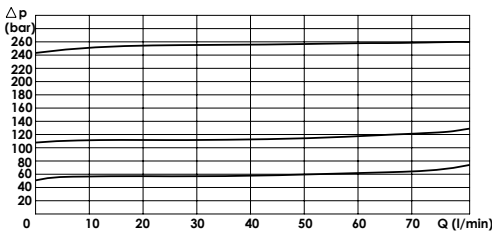


PORTS

V1 - V2	1/2	3/4
M1 - M2	1/4	



PRESSURE DROP CURVES



SPRINGS

Code	Adjustable pressure range bar	Pressure increase bar/turn	Standard setting bar
05	5-55	5	5
10	25-250	12	25
25	130-350	30	75

ORDERING CODE:



- Ports Size:** - 1/2
- 3/4
- Material Body:** - Omit if aluminium
- S = Steel
- Type of Regulator:** - S = Screw
- V = Handknob
- Springs:** - 05 - 10
- 25
- Adjustment if Required:** - Omit if not required
- Value