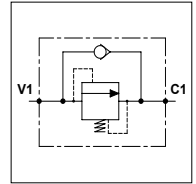


WSD LF 30

TECHNICAL DATA

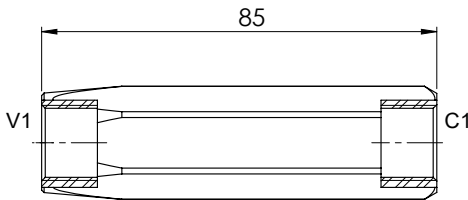
- **Flow:** 30 l/min
- **Max working pressure:** 350 bar
- **Materials:** Steel Body
- **Version:** Fixed Setting - Multiple of 10 bar
- **Weight:** 0,200 kg



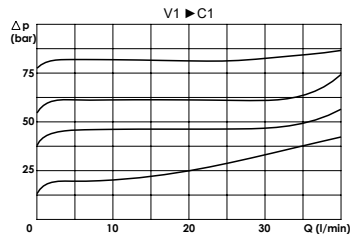
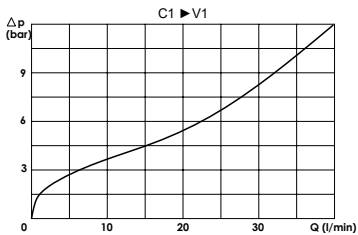
PORTS

C1 - V1

3/8



PRESSURE DROP CURVES



ORDERING CODE:

WSD

LF

30

3/8

Value Setting:

-20 -30
-40 -50
-60 -70
-... -420