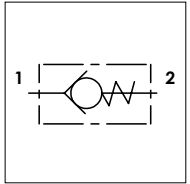


## WUC JIC MF

### TECHNICAL DATA

- **Flow:** 30 l/min
- **Max working pressure:** 350 bar
- **Cracking pressure:** <0,5 bar
- **Materials:** Steel Body
- **Version:** Poppet Type - Direct Acting
- **Weight:** 0,110 kg

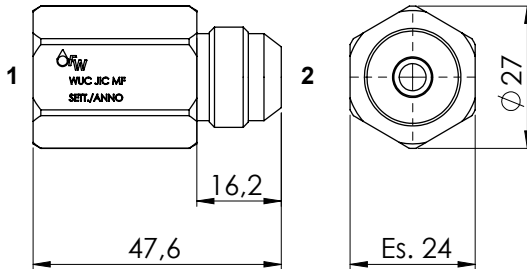


### PORTS

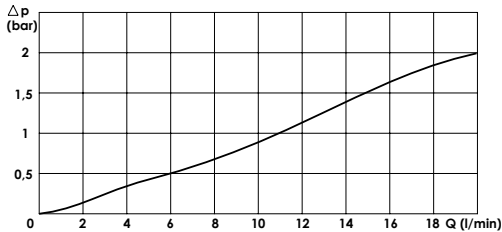
|       |        |
|-------|--------|
| 1 - 2 | 08 Jic |
|-------|--------|

### DIMENSIONS

|        |        |
|--------|--------|
| Thread | 3/4-16 |
|--------|--------|



### PRESSURE DROP CURVES



## ORDERING CODE:

WUC

JIC

08

MF