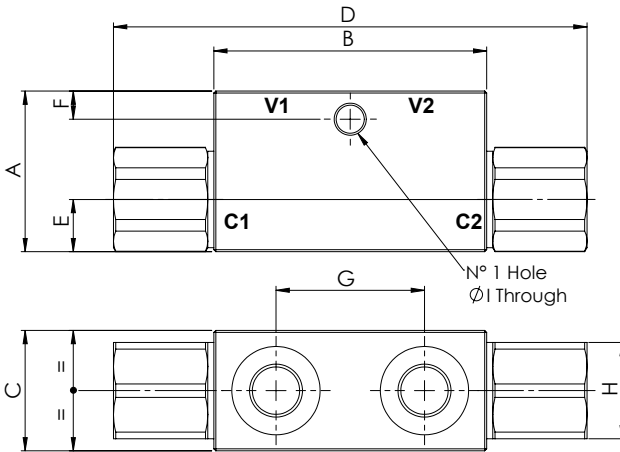
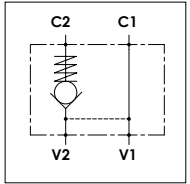


WBD 1SC

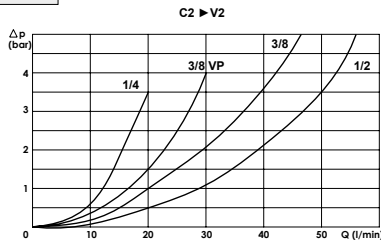
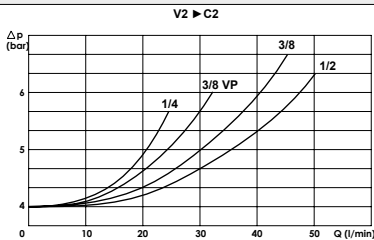
TECHNICAL DATA

- **Flow:** (See table)
- **Max working pressure:** 350 bar (250 bar)
- **Cracking pressure:** (See table)
- **Materials:** Steel Body (Aluminium body if required)
- **Pilot ratio:** (See table)
- **Weight:** (See table)



PORTS				
C1 - C2 V1 - V2	1/4	3/8VP	3/8	1/2
DIMENSIONS				
A	40	40	50	50
B	68	68	80	80
C	30	30	30	30
D	118	118	143	143
E	13	13	16	16
F	7	7	15	15
G	38	38	40	40
H	24	24	27	27
I	7	7	8,5	8,5
Pilot Ratio	4:1	4:1	4:1	4:1
Max Pressure (bar)	350	350	300	300
Max Flow (l/min)	25	30	45	50
Weight (Kg)	0,650	0,600	0,930	0,870

PRESSURE DROP CURVES



SPRINGS	
Code	Cracking pressure bar
05	0,5
4 Standard	4
8	8

ORDERING CODE:

WBD

1SC

Ports Size:

- 1/4 - 3/8VP
- 3/8 - 1/2

Material Body:

- Omit if steel
- A = Aluminium

Cracking Pressure:

- Omit if 4 bar
- 05 = 0,5 bar
- 8 = 8 bar

Seal on Piston:

- Omit if required
- NG = no required