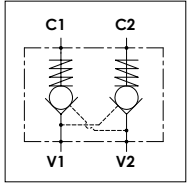


WBD 40 L

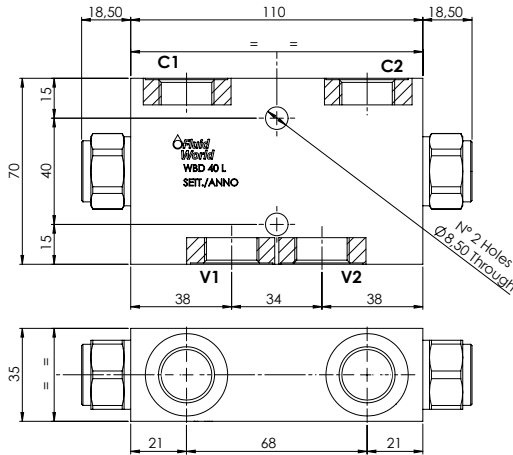
TECHNICAL DATA

- **Flow:** 40 l/min
- **Max working pressure:** 250 bar (350 bar)
- **Cracking pressure:** (See table)
- **Materials:** Aluminium Body (Steel body if required)
- **Pilot ratio:** (See table)
- **Weight:** 0,660 kg (1,540 kg)

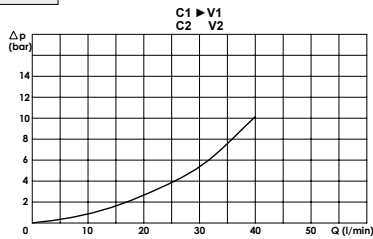
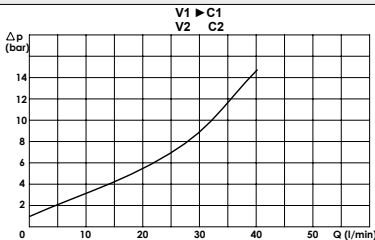


PORTS

C1 - C2 V1 - V2	1/2
--------------------	-----



PRESSURE DROP CURVES



SPRINGS

Code	Cracking pressure bar
1 Standard	1
5	5

ORDERING CODE:

WBD

40

L

1/2

Material Body:

- Omit if aluminium
- S = Steel

Cracking Pressure:

- Omit if 1 bar
- 5 = 5 bar

Seal on Piston:

- Omit if not required
- G = Required