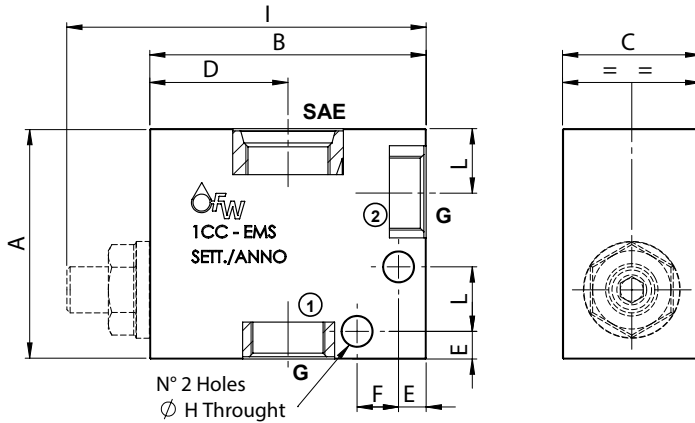
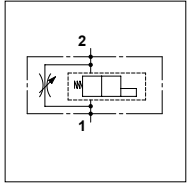


ICC - EMS

TECHNICAL DATA

- **Max working pressure:** 250 bar (350 bar)
- **Materials:** Aluminium Body (Steel body if required)
- **Note:** Screw and nut not included with code 3 and 5, complete of components with code 7 and 9



DIMENSIONS											
SAE	G	A	B	C	D	E	F	H	I	L	Code Cavity SAE
10	1/2	65	70	35	35	6	9	6,5	88	18	FW7802000

ORDERING CODE

ICC

10

02

12

For body with SAE 12,
Please contact our sales department.

Material Body:

- 3 = Aluminium
- 5 = Steel
- 7 = Aluminium Complete
- 9 = Steel Complete