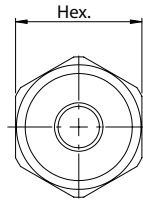
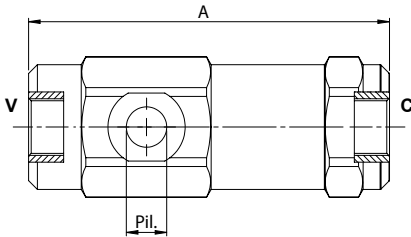
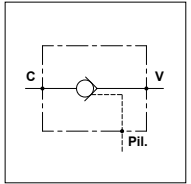


## WBS

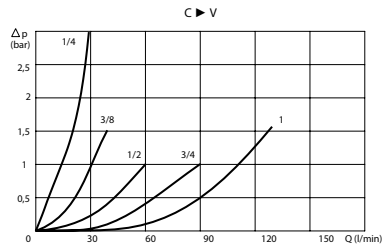
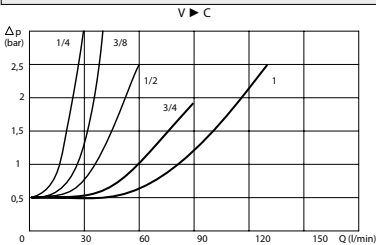
### TECHNICAL DATA

- **Flow:** See table
- **Max working pressure:** See table
- **Cracking pressure:** 0,5 bar
- **Materials:** Steel Body
- **Version:** Poppet Type - Pilot Acting
- **Pilot ratio:** See table
- **Weight:** See table



PORTS					
C - V	1/4	3/8	1/2	3/4	1
Pil.	1/4				
DIMENSIONS					
A	103	112	122	145	164
Hex.	36	40	42	55	55
Pilot Ratio	9:1	6:1	4:1	4:1	3,5:1
Max Pressure (bar)	350	350	350	300	250
Max Flow (l/min)	25	40	60	90	130
Weight (kg)	0,700	0,980	1,100	2,300	2,450

### PRESSURE DROP CURVES



### ORDERING CODE

WBS



Ports Size:

- 1/4
- 3/8
- 1/2
- 3/4
- 1