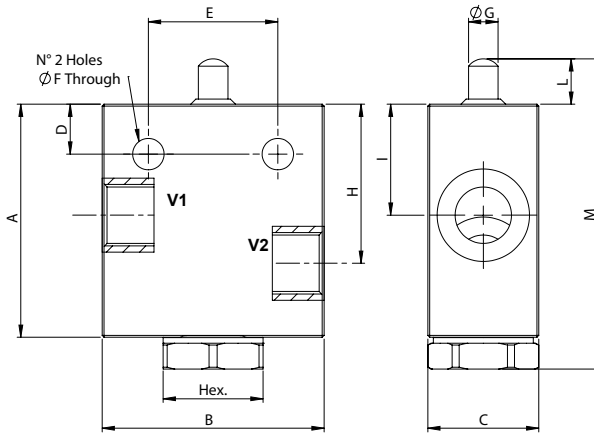
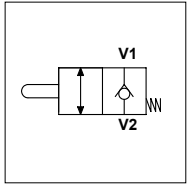


WFC NC

TECHNICAL DATA

- **Flow:** See Table
- **Max working pressure:** See Table
- **Materials:** Steel Body
- **Weight:** See Table



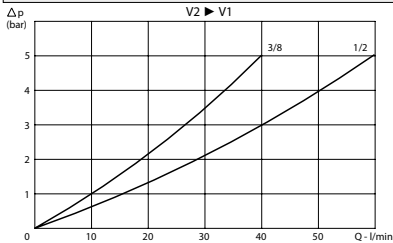
PORTS

V1 - V2	3/8	1/2
---------	-----	-----

DIMENSIONS

	3/8	1/2
A	65	77
B	60	70
C	30	35
D	13,5	13,5
E	35	40
F	8,5	8,5
G	8	12
H	43	51
I	30	37
L	12,3	11,8
M	83,9	95,5
Hex.	27	32
Max Pressure (bar)	350	350
Max Flow (l/min)	30	60
Weight (kg)	0,800	1,280

PRESSURE DROP CURVES



ORDERING CODE

WFC

NC

Ports Size:

- 3/8
- 1/2