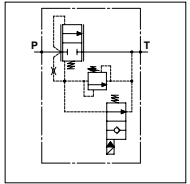


WMD 100 - VE

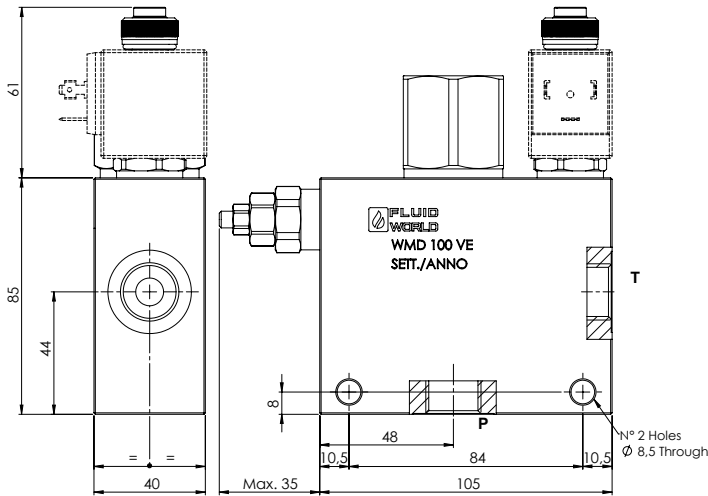
TECHNICAL DATA

- **Flow:** 100 l/min
- **Max working pressure:** 250 bar
- **Materials:** Aluminium Body
- **Note:** The Coil is not included
- **Weight:** 1,400 kg



PORTS

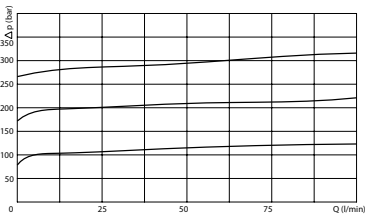
P - T	3/8	1/2
-------	-----	-----



OPTION

<input checked="" type="checkbox"/> Tamper Proof Cap	
--	--

PRESSURE DROP CURVES



SPRINGS

Code	Adjustable pressure range bar	Pressure increase bar/turn	Standard setting bar
05	20-70	40	20
20	50-180	80	50
35	130-350	120	130

ORDERING CODE



Ports Size:
- 3/8
- 1/2

Type of VE:
- NA
- NC

Springs: - 05
- 20
- 35

Adjustment if Required:
- Omit if not required
- Value
- Value with X