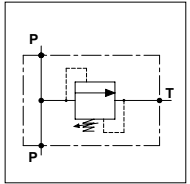
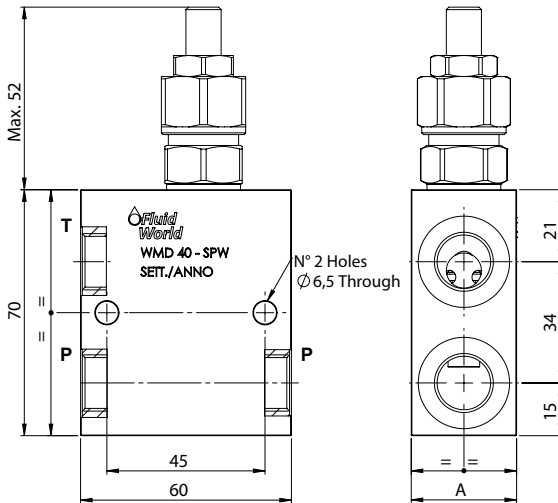



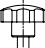

WMD 40 - SPW

TECHNICAL DATA

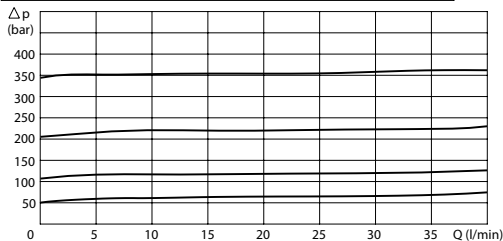
- **Flow:** 40 l/min
- **Max setting pressure:** 350 bar
- **Max working pressure:** 250 bar (350 bar)
- **Materials:** Aluminium Body (Steel Body if required)
- **Version:** Poppet Type - Direct Acting
- **Weight:** 0,450 kg (0,950 kg)



PORTS		
P - T	3/8	1/2
DIMENSIONS		
A	30	35

REGULATOR	
(S) Screw	
(V) Handknob	
OPTION	
(X) Tamber Proof Cap	

PRESSURE DROP CURVES



SPRINGS			
Code	Adjustable pressure range bar	Pressure increase bar/turn	Standard setting bar
05	5-55	15	5
10	25-110	25	25
20	50-215	50	50
35	100-350	90	100

ORDERING CODE



- Ports Size:** - 3/8
- 1/2
- Material Body:** - Omit if aluminium
- S = Steel
- Type of Regulator:** - S = Screw
- V = Handknob
- Springs:** - 05
- 10
- 20
- 35
- Adjustment if Required:** - Omit if not required
- Value
- Value with X