

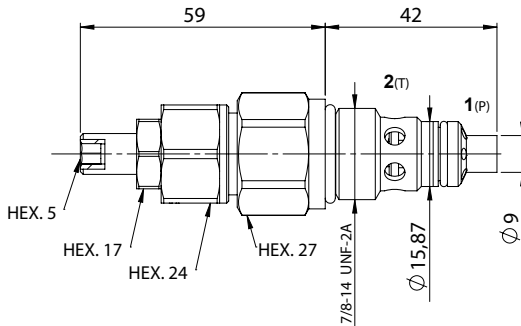
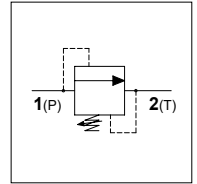
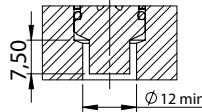
WMD 50

TECHNICAL DATA

- **Flow:** 60 l/min
- **Max setting pressure:** 350 bar
- **Materials:** Cartridge in Steel Zinc Plated
- **Version:** Poppet Type - Direct Acting
- **Cavity:** See table
- **Installation torque:** 40-45 Nm
- **Weight:** 0,170 kg

CAVITY

FW7802000 with the addition of a minimum hole of $\varnothing 12$ to house the valve nose.



REGULATOR

(S)
Screw



(V)
Handknob

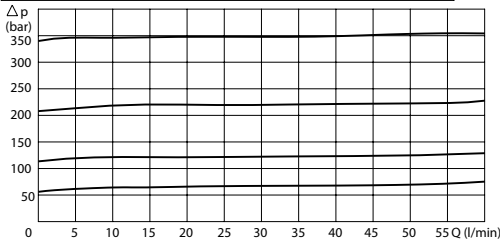


OPTION

(X)
Tamper
Proof
Cap



PRESSURE DROP CURVES



SPRINGS

Code	Adjustable pressure range bar	Pressure increase bar/turn	Standard setting bar
05	5-55	15	5
10	25-110	25	25
20	50-215	50	50
35	100-350	90	100

ORDERING CODE

WMD

50

Type of Regulator:

- S = Screw
- V = Handknob

Springs:

- 05
- 10
- 20
- 35

Adjustment if Required:

- Omit if not required
- Value
- Value with X

