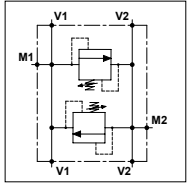


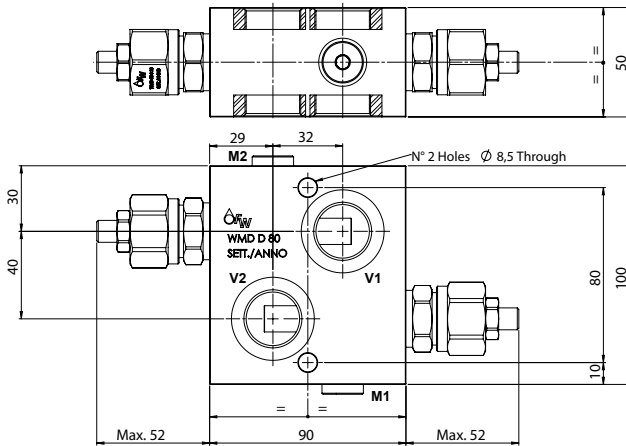
WMD D 80


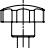

TECHNICAL DATA

- **Flow:** 80 l/min
- **Max setting pressure:** 350 bar
- **Max working pressure:** 250 bar (350 bar)
- **Materials:** Aluminium Body (Steel Body if required)
- **Weight:** 1,700 kg (3,300 kg)

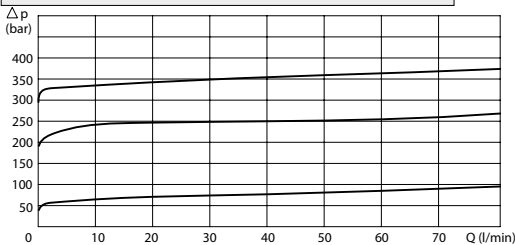


PORTS		
V1 - V2	1/2	3/4
M1 - M2	1/4	



REGULATOR	
(S) Screw	
(V) Handknob	
OPTION	
(X) Tamper Proof Cap	

PRESSURE DROP CURVES



SPRINGS			
Code	Adjustable pressure range bar	Pressure increase bar/turn	Standard setting bar
05	5-55	5	5
10	25-250	12	25
25	130-350	30	130

ORDERING CODE



- Ports Size:** - 1/2 - 3/4
- Material Body:** - Omit if aluminium - S = Steel
- Type of Regulator:** - S = Screw - V = Handknob
- Springs:** - 05 - 10 - 25
- Adjustment if Required:** - Omit if not required - Value - Value with X