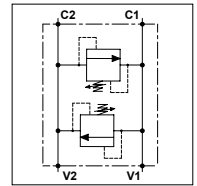
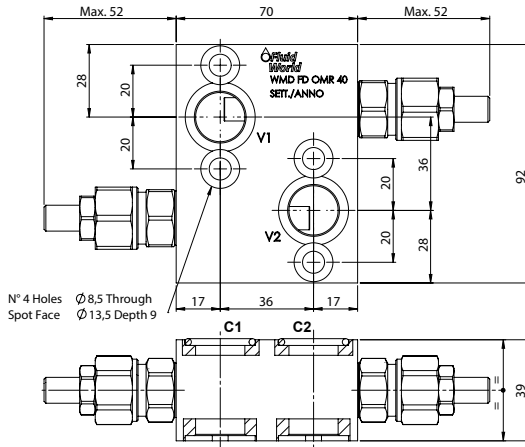


## WMD FD OMR 40

### TECHNICAL DATA


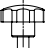

- **Flow:** 40 l/min
- **Max setting pressure:** 350 bar
- **Max working pressure:** 250 bar (350 bar)
- **Materials:** Aluminium Body (Steel body if required)
- **Note:** Flangeable on Danfoss motors OMP/R/H
- **Weight:** 0,850 kg (1,800 kg)



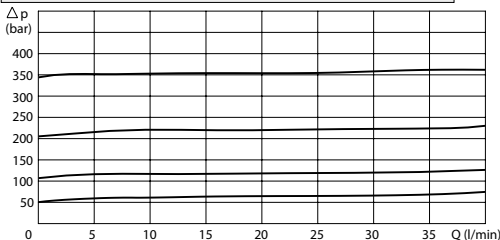
### PORTS

C1 - C2	ø19
V1 - V2	1/2

### REGULATOR

<b>(S)</b> Screw	
<b>(V)</b> Handknob	
<b>OPTION</b>	
<b>(X)</b> Tammer Proof Cap	

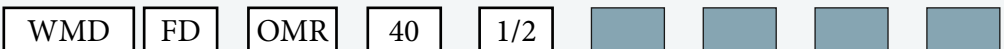
### PRESSURE DROP CURVES



### SPRINGS

Code	Adjustable pressure range bar	Pressure increase bar/turn	Standard setting bar
<b>05</b>	5-55	15	5
<b>10</b>	25-110	25	25
<b>20</b>	50-215	50	50
<b>35</b>	100-350	90	100

### ORDERING CODE



- Material Body:**  
 - Omit if aluminium  
 - S = Steel
- Type of Regulator:**  
 - S = Screw  
 - V = Handknob
- Springs:**  
 - 05  
 - 10  
 - 20  
 - 35
- Adjustment if Required:**  
 - Omit if not required  
 - Value  
 - Value with X