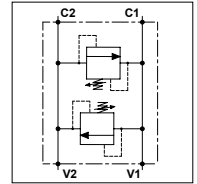
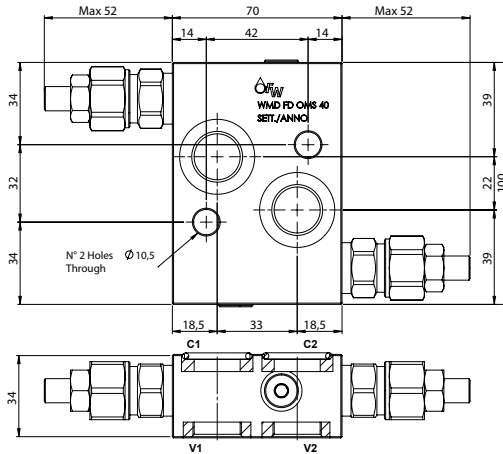


## WMD FD OMS 40

### TECHNICAL DATA

- **Flow:** 40 l/min
- **Max setting pressure:** 350 bar
- **Max working pressure:** 250 bar (350 bar)
- **Materials:** Aluminium Body (Steel body if required)
- **Note:** Flangeable on Danfoss motors OMS/T/V
- **Weight:** 0,900 kg (1,950 kg)



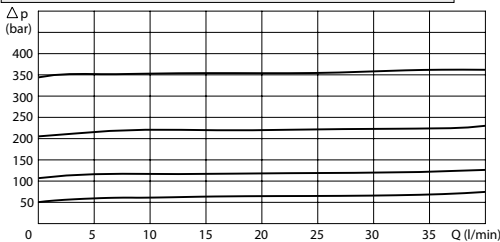
### PORTS

C1 - C2	ø19
V1 - V2	1/2

### REGULATOR

<b>(S)</b> Screw	
<b>(V)</b> Handknob	
<b>OPTION</b>	
<b>(X)</b> Tamper Proof Cap	

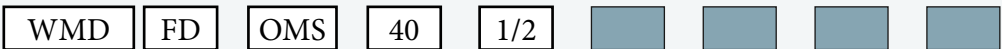
### PRESSURE DROP CURVES



### SPRINGS

Code	Adjustable pressure range bar	Pressure increase bar/turn	Standard setting bar
<b>05</b>	5-55	15	5
<b>10</b>	25-110	25	25
<b>20</b>	50-215	50	50
<b>35</b>	100-350	90	100

### ORDERING CODE



#### Material Body:

- Omit if aluminium
- S = Steel

#### Type of Regulator:

- S = Screw
- V = Handknob

#### Springs:

- 05
- 10
- 20
- 35

#### Adjustment if Required:

- Omit if not required
- Value
- Value with X