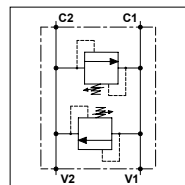
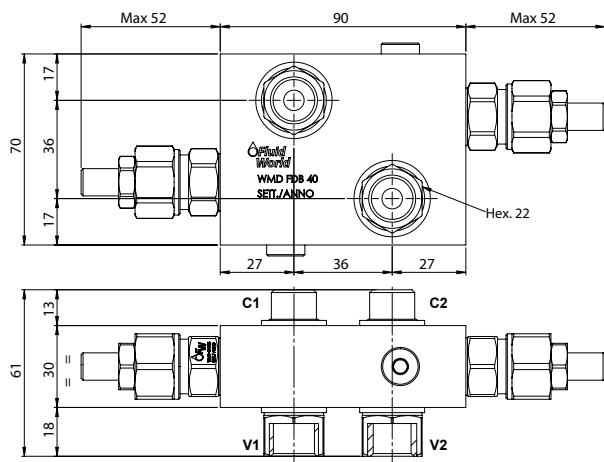


WMD FDB OMR 40

TECHNICAL DATA

- **Flow:** 40 l/min
- **Max setting pressure:** 350 bar
- **Max working pressure:** 250 bar
- **Materials:** Aluminium Body
- **Note:** Flangeable on Danfoss motors OMP/R/H
- **Weight:** 0,920 kg



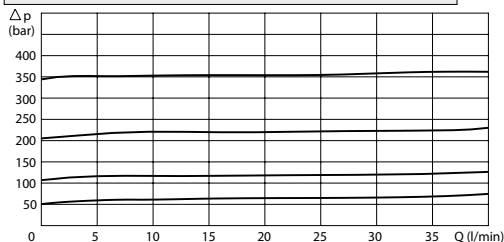
PORTS

C1 - C2 V1 - V2	3/8	1/2
--------------------	-----	-----

REGULATOR

(S) Screw	
(V) Handknob	
OPTION	
(X) Tammer Proof Cap	

PRESSURE DROP CURVES



SPRINGS

Code	Adjustable pressure range bar	Pressure increase bar/turn	Standard setting bar
05	5-55	15	5
10	25-110	25	25
20	50-215	50	50
35	100-350	90	100

ORDERING CODE

WMD FDB OMR 40

- | | | | |
|--------------------|---------------------------|-----------------|--------------------------------|
| █ | █ | █ | █ |
| Ports Size: | Type of Regulator: | Springs: | Adjustment if Required: |
| - 3/8 | - S = Screw | - 05 | - Omit if not required |
| - 1/2 | - V = Handknob | - 10 | - Value |
| | | - 20 | - Value with X |
| | | - 35 | |