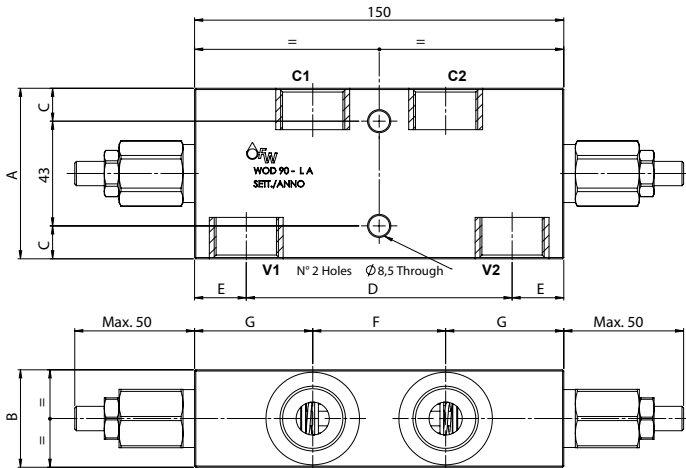
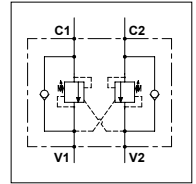


WOD 90 - L A

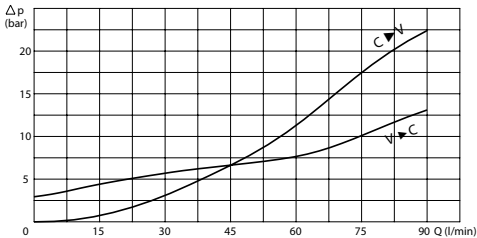
TECHNICAL DATA

- Flow:** 90 l/min
 - Max setting pressure:** 250 bar
 - Materials:** Aluminium Body
 - Pilot ratio:** 4:1 (if request 1:1; 8:1; 11:1)
 - Weight:** See Table
 - Note:** Only on request, please contact our sales department
- Note:** Pressure setting must be 30 % higher that pressure induced by the load



PORTS		
C1 - C2 V1 - V2	1/2	3/4
DIMENSIONS		
A	65	70
B	35	40
C	11	13,5
D	112	108
E	19	21
F	48	54
G	51	48
Weight (kg)	1,250	1,860

PRESSURE DROP CURVES



SPRINGS

Code	20			35		
	Adjustable pressure range bar	Pressure increase bar/turn	Standard setting bar	Adjustable pressure range bar	Pressure increase bar/turn	Standard setting bar
1:1	10-70	15	10	30-200	25	30
4:1	60-210	70	170	80-350	120	280
8:1	60-220	50		100-350	85	
11:1	60-250	90		80-350	150	

ORDERING CODE

WOD	90		L	A			
		Ports Size:			Springs:	Pilot Ratio:	Adjustment if Required:
		- 1/2			- 20	- Omit if 4:1	- Omit if not required
		- 3/4			- 35	- 1 = 1:1	- Value
						- 8 = 8:1	
						- 11 = 11:1	