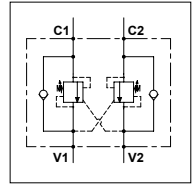


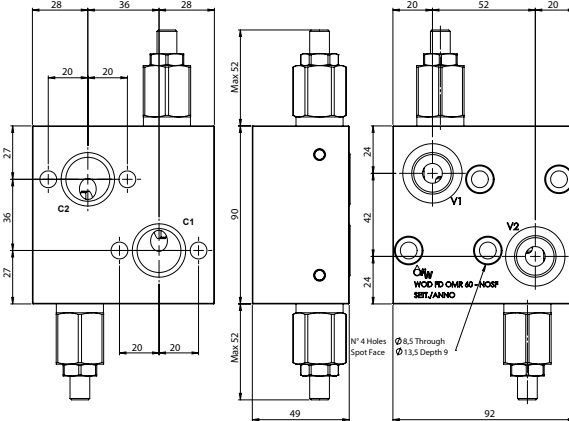
### WOD FD OMR 60 - NOSF

#### TECHNICAL DATA

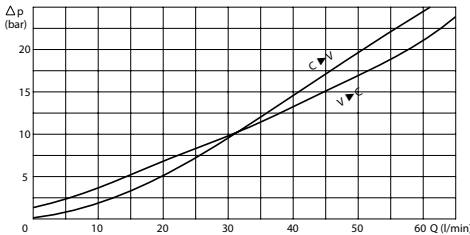
- Flow:** 60 l/min
- Max setting pressure:** 350 bar
- Max working pressure:** 250 bar (350 bar)
- Materials:** Aluminium Body (Steel body if required)
- Pilot ratio:** 4:1 (if request 1:1; 8:1; 11:1)
- Note:** Flangeable on Danfoss motors OMP/R/H
- Weight:** 1,600 kg (3,400 kg)



PORTS		
V1 - V2	3/8	1/2
C1 - C2	ø8,5	



#### PRESSURE DROP CURVES



#### SPRINGS

Code	20			35		
	Adjustable pressure range bar	Pressure increase bar/turn	Standard setting bar	Adjustable pressure range bar	Pressure increase bar/turn	Standard setting bar
1:1	10-70	15	10	30-200	25	30
4:1	60-210	70	170	80-350	120	280
8:1	60-220	50		100-350	85	
11:1	60-250	90		80-350	150	

#### ORDERING CODE

WOD FD OMR 60 [ ] [ ] [ ] NOSF

- Ports Size:** - 3/8  
- 1/2
- Material Body:** - Omit if aluminium  
- S = Steel
- Springs:** - 20  
- 35
- Pilot Ratio:** - Omit if 4:1  
- 1 = 1:1  
- 8 = 8:1  
- 11 = 11:1
- Adjustment if Required:** - Omit if not required  
- Value