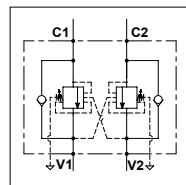


### WODFC 30 - L A

#### TECHNICAL DATA

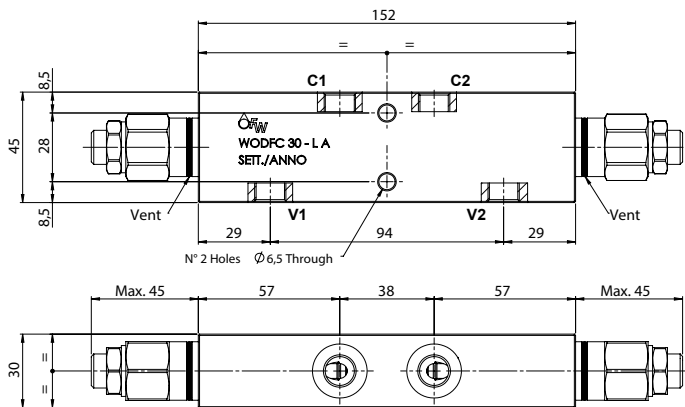
- Flow:** 30 l/min
- Max setting pressure:** 250 bar
- Materials:** Aluminium Body
- Pilot ratio:** 4:1 (if request 8:1; 11:1)
- Weight:** 0,850 kg

- Note:** - Pressure setting must be 30 % higher that pressure induced by the load.  
- Recommended for use with closed center spools.

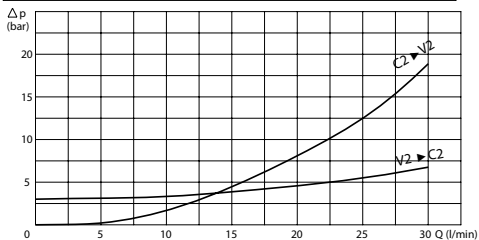


#### PORTS

C1 - C2 V1 - V2	1/4
--------------------	-----



#### PRESSURE DROP CURVES



#### SPRINGS

Code	20			35		
	Adjustable pressure range bar	Pressure increase bar/turn	Standard setting bar	Adjustable pressure range bar	Pressure increase bar/turn	Standard setting bar
4:1	60-210	70	170	80-350	120	280
8:1	60-220	50		100-350	85	
11:1	60-250	90		80-350	150	

#### ORDERING CODE

WODFC

30

1/4

L

A



#### Springs:

- 20
- 35

#### Pilot Ratio:

- Omit if 4:1
- 8 = 8:1
- 11 = 11:1

#### Adjustment if Required:

- Omit if not required
- Value