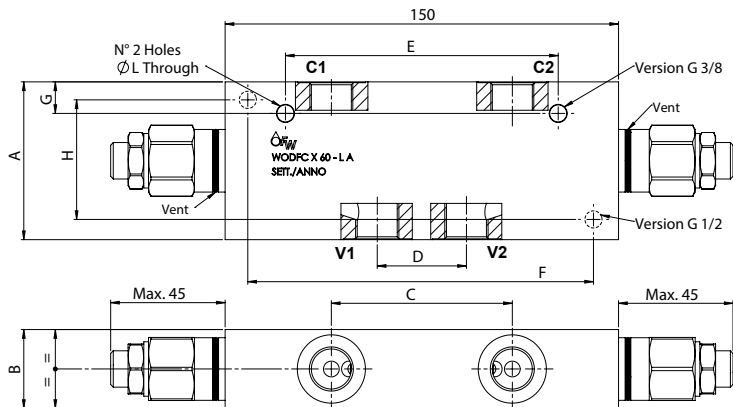
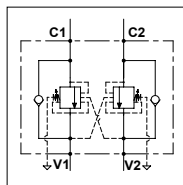


WODFC X 60 - L A

TECHNICAL DATA

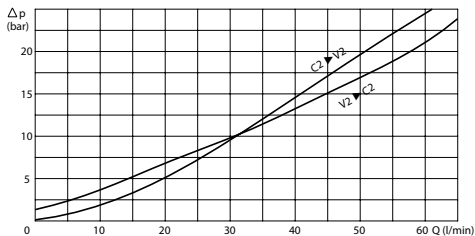
- Flow:** 60 l/min
- Max setting pressure:** 250 bar
- Materials:** Aluminium Body
- Pilot ratio:** 4:1 (if request 1:1; 8:1; 11:1)
- Weight:** See Table

- Note:** - Pressure setting must be 30 % higher that pressure induced by the load.
- Recommended for use with closed center spools.



PORTS		
C1 - C2 V1 - V2	3/8	1/2
DIMENSIONS		
A	60	70
B	30	35
C	69	80
D	34	36
E	104	-
F	-	125
G	12	-
H	-	54
L	6,5	8,5
Weight (kg)	1,020	1,255

PRESSURE DROP CURVES



SPRINGS

Code	20			35			
	Pilot ratio	Adjustable pressure range bar	Pressure increase bar/turn	Standard setting bar	Adjustable pressure range bar	Pressure increase bar/turn	Standard setting bar
1:1	10-70	15	10	30-200	25	30	
4:1	60-210	70	170	80-350	120	280	
8:1	60-220	50		100-350	85		
11:1	60-250	90		80-350	150		

ORDERING CODE

WODFC

X

60

[]

L

A

[]

[]

[]

Ports Size:
- 3/8
- 1/2

Springs:
- 20
- 35

Pilot Ratio:
- Omit if 4:1
- 1 = 1:1
- 8 = 8:1
- 11 = 11:1

Adjustment if Required:
- Omit if not required
- Value