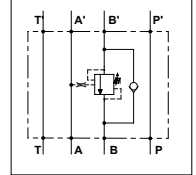
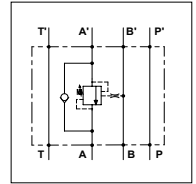
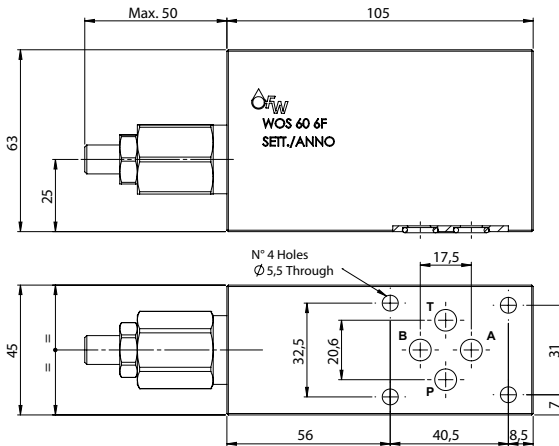


WOS 60 6F

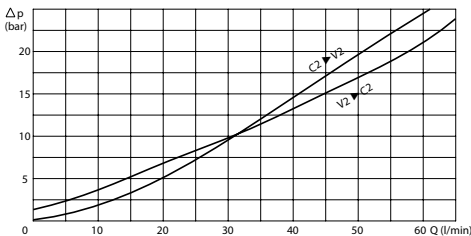
TECHNICAL DATA

- **Flow:** 60 l/min
- **Max setting pressure:** 350 bar (250 bar)
- **Materials:** Steel Body (Aluminium body if required)
- **Pilot ratio:** 4:1 (if request 1:1; 8:1; 11:1)
- **Weight:** 1,600 kg (0,750 kg)

- **Note:** Pressure setting must be 30 % higher that pressure induced by the load



PRESSURE DROP CURVES



SPRINGS

Code	20			35			
	Pilot ratio	Adjustable pressure range bar	Pressure increase bar/turn	Standard setting bar	Adjustable pressure range bar	Pressure increase bar/turn	Standard setting bar
1:1	10-70	15	10	30-200	25	30	
4:1	60-210	70	170	80-350	120	280	
8:1	60-220	50		100-350	85		
11:1	60-250	90		80-350	150		

ORDERING CODE

WOS

60

6F

Material Body:
- Omit if steel
- A = Aluminium

Setting Up:
- A
- B

Springs:
- 20
- 35

Pilot Ratio:
- Omit if 4:1
- 1 = 1:1
- 8 = 8:1
- 11 = 11:1

Adjustment if Required:
- Omit if not required
- Value