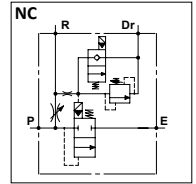
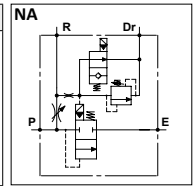
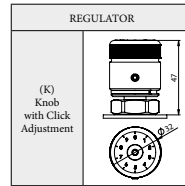


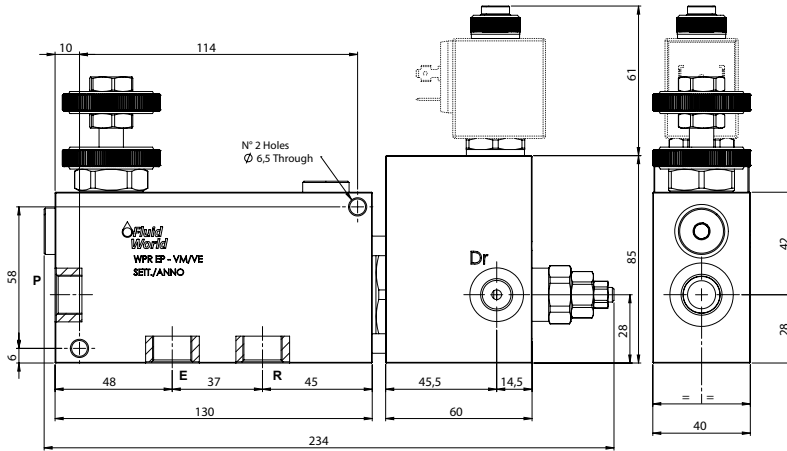
### WPR EP - VM/VE

#### TECHNICAL DATA

- Flow:** G 3/8: 50 l/min with 30 l/min in R  
G 1/2: 90 l/min with 50 l/min in R
- Max working pressure:** 250 bar (350 bar)
- Materials:** Aluminium Body (Steel body if required)
- Version:** Exceeding Flow to Pressure
- Note:** Handwheel in Aluminium Black Anodized
- Weight:** 2,300 Kg (3,900 Kg)

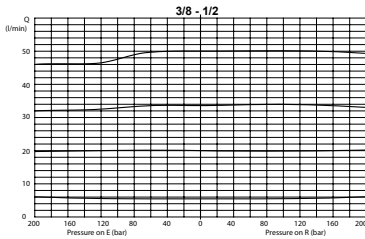


PORTS		
P - R - E	3/8	1/2
Dr	1/4	



OPTION	
<input checked="" type="checkbox"/> Tamper Proof Cap	

#### COMPENSATION CURVES



SPRINGS			
Code	Adjustable pressure range bar	Pressure increase bar/turn	Standard setting bar
05	20-70	10	20
20	50-180	25	50
35	130-350	60	130

#### ORDERING CODE



- |                    |  |   |  |  |  |                                    |  |
|--------------------|--|---|--|--|--|------------------------------------|--|
| <b>Ports Size:</b> | <b>Spring Pressure Relief Valve:</b>                 | <b>Adjustment if Required:</b>                      | <b>Solenoid Valve:</b>                       | <b>Manual Overrides:</b>   | <b>Coil:</b>                           | <b>Material Body:</b>              | <b>Type of Regulator:</b>                              |
| - 3/8<br>- 1/2     | - Omit if not required<br>- VM05<br>- VM20<br>- VM35 | - Omit if not required<br>- Value<br>- Value with X | - Omit if not required<br>- VE NA<br>- VE NC | - Omit if not required<br>- EMS = Screw<br>- EMP = Push<br>- EMPT = Push & Twist | - Omit if not required<br>- 12<br>- 24 | - Omit if aluminium<br>- S = Steel | - Omit if standard<br>- K = Knob with click adjustment |