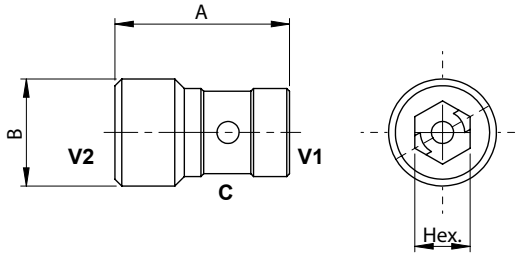
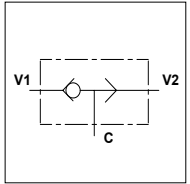


WS I

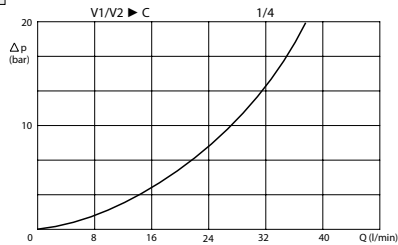
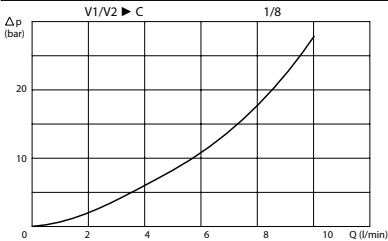
TECHNICAL DATA

- **Flow:** See table
- **Max working pressure:** 350 bar
- **Materials:** Steel Body
- **Version:** Ball Type
- **Cavity:** See table
- **Weight:** See table



PORTS		
B	1/8	1/4
DIMENSIONS		
A	14,9	22,5
Hex.	5	6
Max Flow (l/min)	10	35
Cavity	FW1803100	FW1403100
Weight (kg)	0,010	0,040

PRESSURE DROP CURVES



ORDERING CODE

WS

I

Ports Size:
- 1/8
- 1/4