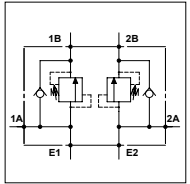


WSD D 40

TECHNICAL DATA

- **Flow:** 40 l/min
- **Max setting pressure:** 350 bar
- **Max working pressure:** 250 bar
- **Materials:** Aluminium Body
- **Version:** Poppet Type - Direct Acting
- **Weight:** 1,480 kg



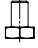

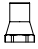
PORTS

A1 - B1 - E1 A2 - B2 - E2	1/2
------------------------------	-----

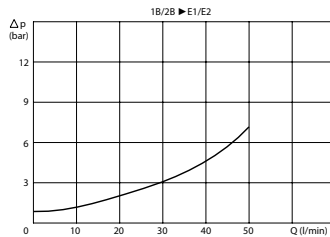
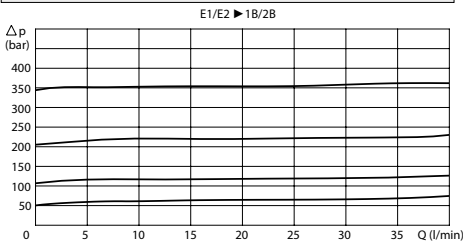
SPRINGS

Code	Adjustable pressure range bar	Pressure increase bar/turn	Standard setting bar
05	5-55	15	5
10	25-110	25	25
20	50-215	50	50
35	100-350	90	100

REGULATOR

(S) Screw	
(V) Handknob	
OPTION	
(X) Tammer Proof Cap	

PRESSURE DROP CURVES



ORDERING CODE

WSD

D

40

1/2

Type of Regulator:

- S = Screw
- V = Handknob

Springs:

- 05
- 10
- 20
- 35

Adjustment if Required:

- Omit if not required
- Value
- Value with X