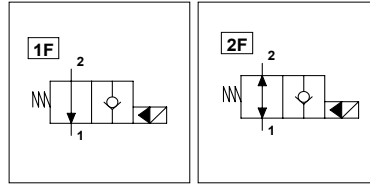


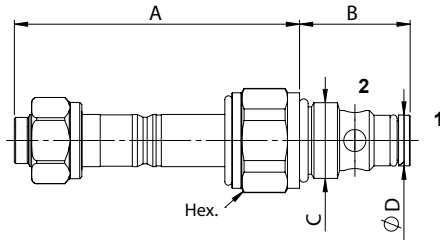
WST - NA

TECHNICAL DATA

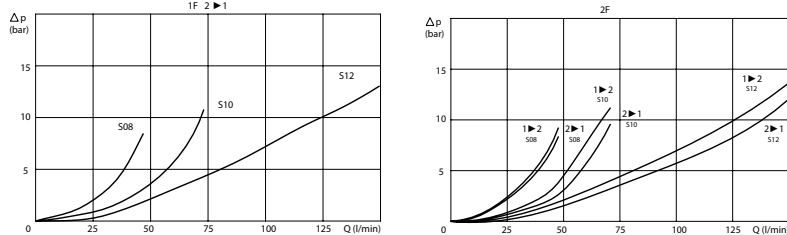
- **Flow:** See table
- **Max working pressure:** 350 bar
- **Materials:** Cartridge in Steel zinc plated
- **Version:** Poppet Type - Pilot Acting
- **Cavity:** See table
- **Installation torque:** See table
- **Weight:** See table



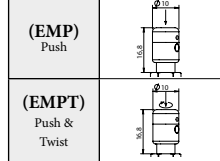
PORTS			
Size	S08	S10	S12
DIMENSIONS			
A	71,2	68,8	65,8
B	27,6	32	46
C	3/4-16UNF	7/8-14UNF	1 1/16-12UNF
D	12,7	15,8	22,2
Hex.	24	27	32
Max Flow (l/min)	40	70	150
Cavity	FW3402000	FW7802000	FW1160200
Installation torque (Nm)	30	40	60
Weight (kg)	0,160	0,190	0,260



PRESSURE DROP CURVES



MANUAL OVERRIDE



ORDERING CODE

WST

NA

Ports Size:

- S08 = SAE 08/2
- S10 = SAE 10/2
- S12 = SAE 12/2

Type of Scheme:

- Omit for scheme 1F
- 2F = Scheme 2F

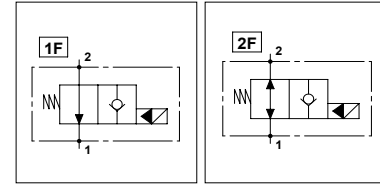
Manual Override:

- Omit if not required
- EMP = Push
- EMPT = Push & Twist

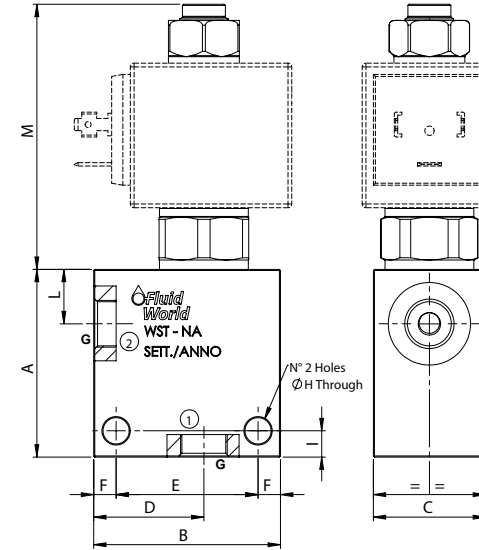
WST - NA

TECHNICAL DATA

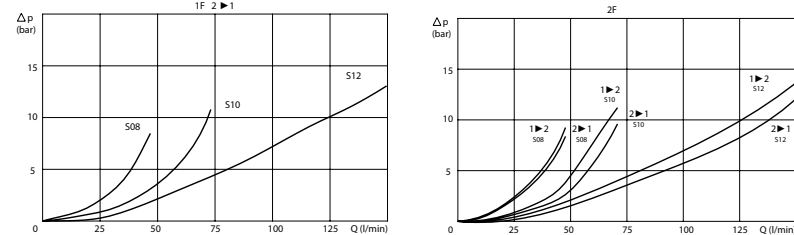
- **Flow:** See table
- **Max working pressure:** 250 bar (350 bar)
- **Materials:** Aluminium Body (Steel body if required)
- **Version:** Poppet Type - Pilot Acting
- **Note:** 22W coil on the page 290



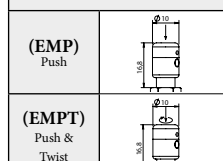
PORTS				
Size	S08	S10	S12	
G	1/4	1/2	3/4	1
	3/8			
DIMENSIONS				
A	50	56	70	80
B	50	60	70	80
C	30	35	40	50
D	30	35	40	46
E	38	48	54	60
F	6	6	8	10
H	7	7	9	8,5
I	7	7	8	8
L	14,5	18,5	26,5	26,5
M	70,7	68,3	65,3	65,3
Max Flow (l/min)	40	70	150	150



PRESSURE DROP CURVES



MANUAL OVERRIDE



ORDERING CODE

WST

NA

Ports Size:

- S08 = SAE 08/2
- S10 = SAE 10/2
- S12 = SAE 12/2

Type of Scheme:

- Omit for scheme 1F
- 2F = Scheme 2F

Manual Override:

- Omit if not required
- EMP = Push
- EMPT = Push & Twist

Ports Size:

- 1/4 ; 3/8
- 1/2
- 3/4 ; 1

Material Body:

- Omit if Aluminium
- S = Steel

Optional Body (Only for S08):

- Omit if not required
- B
- EMS

Rated Voltage Coil:

- Omit if not required
- 12
- 24