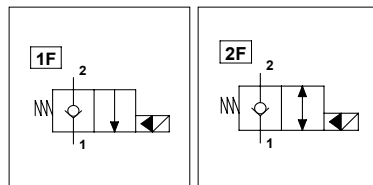


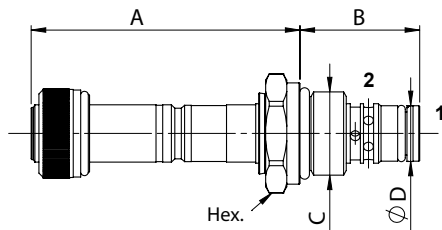
### WST S08 NC - L

#### TECHNICAL DATA

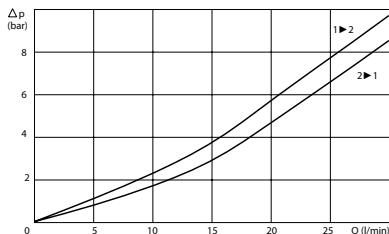
- **Flow:** 30 l/min
- **Max working pressure:** 300 bar
- **Materials:** Cartridge in Steel zinc plated
- **Version:** Poppet Type - Pilot Acting
- **Cavity:** FW3402000
- **Installation torque:** 30 Nm
- **Weight:** 0,120 kg



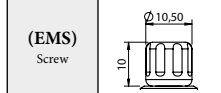
PORTS	
Size	S08
DIMENSIONS	
A	61,1
B	27,2
C	3/4-16UNF
D	12,7
Hex.	24



#### PRESSURE DROP CURVES



#### MANUAL OVERRIDE



#### ORDERING CODE

WST S08 NC [ ] L [ ]

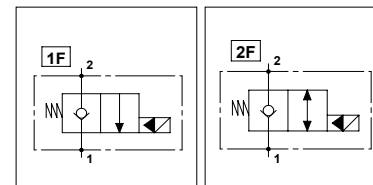
**Type of Scheme:**  
- Omit for scheme 1F  
- 2F = Scheme 2F

**Manual Override:**  
- Omit if not required  
- EMS = Screw

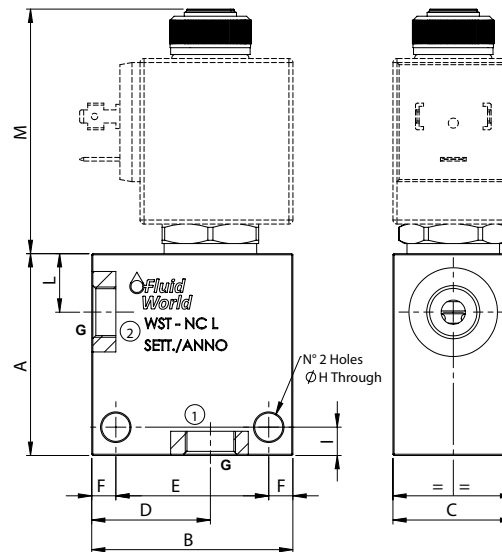
### WST S08 NC - L

#### TECHNICAL DATA

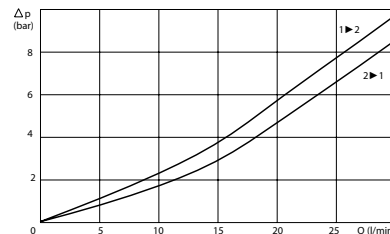
- **Flow:** 30 l/min
- **Max working pressure:** 250 bar (300 bar)
- **Materials:** Aluminium Body (Steel body if required)
- **Version:** Poppet Type - Pilot Acting
- **Note:** 18W coil on the page 289



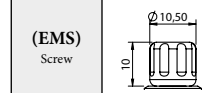
PORTS	
Size	S08
G	1/4
	3/8
DIMENSIONS	
A	50
B	50
C	30
D	30
E	38
F	6
H	7
I	7
L	14,5
M	60,6



#### PRESSURE DROP CURVES



#### MANUAL OVERRIDE



#### ORDERING CODE

WST S08 NC [ ] L [ ] [ ] [ ] [ ] [ ] [ ] [ ]

**Type of Scheme:**  
- Omit for scheme 1F  
- 2F = Scheme 2F

**Manual Override:**  
- Omit if not required  
- EMS = Screw

**Ports Size:**  
- 1/4  
- 3/8

**Material Body:**  
- Omit if Aluminium  
- S = Steel

**Optional Body (Only for S08):**  
- Omit if not required  
- B  
- EMS

**Rated Voltage Coil:**  
- Omit if not required  
- 12  
- 24